

## Product datasheet for TA309586

### Bestrophin (BEST1) Mouse Monoclonal Antibody [Clone ID: E6-6]

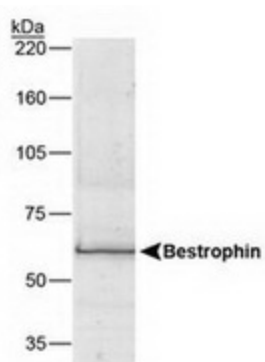
#### Product data:

Product Type:	Primary Antibodies
Clone Name:	E6-6
Applications:	WB
Recommend Dilution:	WB, IF
Reactivity:	Human, Porcine, Primate
Host:	Mouse
Isotype:	IgG1, kappa
Clonality:	Monoclonal
Immunogen:	Synthetic peptide conjugated to KLH [KDHMDPYWALENRDEAHS].
Formulation:	0.1% Sodium Azide
Purification:	Ascites
Predicted Protein Size:	68 kDa
Gene Name:	bestrophin 1
Database Link:	<a href="#">NP_004174 Entrez Gene 7439 Human</a>
Background:	Best macular dystrophy (BMD) or vitelliform macular dystrophy (VMD2), is an autosomal form of macular degeneration, characterized by a depressed light peak in the electrooculogram (EOG). It is inherited and has an early onset. Bestrophin is a 68 kDa basolateral plasma membrane protein encoded by the VMD2 gene. Bestrophin's function is still unknown, but data suggests that it is a chloride channel that plays a role in generating the altered EOG in Best disease patients. In addition, Bestrophin is a useful biochemical and histological marker of RPE (retinal pigment epithelial cells) cells.
Synonyms:	ARB; BEST; BMD; RP50; TU15B; VMD2
Protein Families:	Druggable Genome, Ion Channels: Other, Transmembrane



[View online »](#)

## Product images:



Western Blot: Bestrophin Antibody (E6-6) -  
Western blot detection of Bestrophin (68 kDa)  
from human RPE cell lysate.