

Product datasheet for TA309640

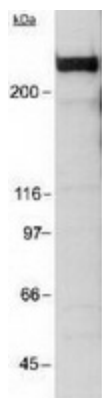
EP300 Mouse Monoclonal Antibody [Clone ID: RW128]

Product data:

Product Type:	Primary Antibodies
Clone Name:	RW128
Applications:	WB
Recommend Dilution:	WB, IP, IF
Reactivity:	Human, Mouse, Primate, Rat
Host:	Mouse
Isotype:	IgG1, kappa
Clonality:	Monoclonal
Immunogen:	Fusion protein containing residues 1572-2371 of human p300.
Formulation:	PBS [pH7.4] and 0.1% Sodium Azide
Concentration:	1 mg/ml
Purification:	Protein A purified
Gene Name:	E1A binding protein p300
Database Link:	NP_001420 Entrez Gene 328572 MouseEntrez Gene 170915 RatEntrez Gene 2033 Human
Synonyms:	KAT3B; p300; RSTS2
Protein Families:	Druggable Genome, Transcription Factors
Protein Pathways:	Adherens junction, Cell cycle, Huntington's disease, Jak-STAT signaling pathway, Long-term potentiation, Melanogenesis, Notch signaling pathway, Pathways in cancer, Prostate cancer, Renal cell carcinoma, TGF-beta signaling pathway, Wnt signaling pathway



[View online »](#)

Product images:

Detection of p300 in a HeLa nuclear extract using anti-p300 (1:250). ECL: 15 second exposure.