

Product datasheet for **TA309675**

GLO1 Mouse Monoclonal Antibody [Clone ID: Glo1a]

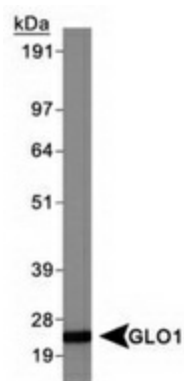
Product data:

Product Type:	Primary Antibodies
Clone Name:	Glo1a
Applications:	IF, WB
Recommend Dilution:	WB, IF, ICC, ELISA
Reactivity:	Human
Host:	Mouse
Isotype:	IgG1, kappa
Clonality:	Monoclonal
Immunogen:	Full length human GLO1-GST fusion protein [Swiss-Prot #Q04760].
Formulation:	Tris-glycine, 150mM NaCl and 0.05% Sodium Azide
Concentration:	1 mg/ml
Purification:	Protein G purified
Gene Name:	glyoxalase I
Database Link:	NP_006699 Entrez Gene 2739 Human
Synonyms:	GLOD1; GLYI; HEL-S-74
Protein Pathways:	Pyruvate metabolism

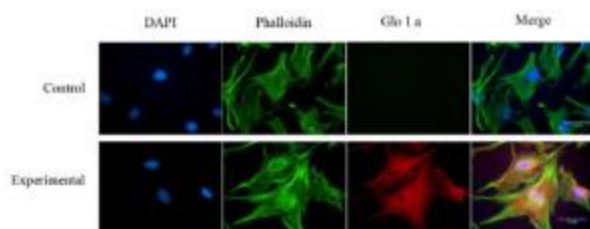


[View online »](#)

Product images:



Western Blot: GLO1 Antibody - Western Blot on HeLa whole cell extracts.



Immunocytochemistry: GLO1 Antibody (Glo1a) - Immunostaining of human retinal endothelial cells. Immunoreactivity for hGlX-1 was detected in human retinal endothelial cells stained with Glo1a mAb using anti mouse IgG Texas Red as secondary Ab. The cells were counter stained with phalloidin (green) and DAPI (blue), nuclear stain. No reactivity was detected in control cells, stained without Go1a mAb. Figure is a representative of 3 independent experiments.