

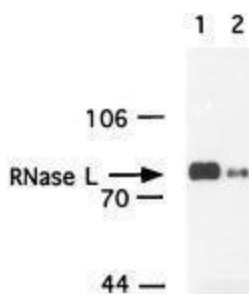
Product datasheet for **TA309838**

RNase L (RNASEL) Mouse Monoclonal Antibody

Product data:

Product Type:	Primary Antibodies
Applications:	WB
Recommend Dilution:	WB, ELISA
Reactivity:	Human, Primate
Host:	Mouse
Isotype:	IgG1, kappa
Clonality:	Monoclonal
Immunogen:	Purified full-length recombinant human RNaseL produced in insect cells.
Formulation:	PBS and 0.1% Sodium Azide
Concentration:	1.7mg/ml
Purification:	Protein G purified
Gene Name:	ribonuclease L
Database Link:	NP_066956 Entrez Gene 6041 Human
Synonyms:	PRCA1; RNS4
Protein Families:	Druggable Genome, Protein Kinase

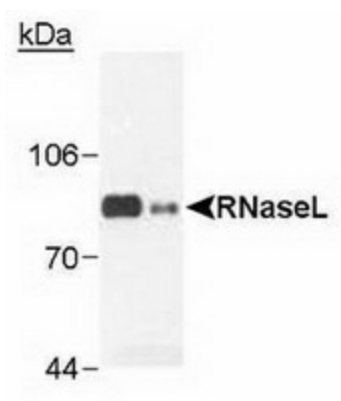
Product images:



RNase L detected in insect cell extracts transfected with recombinant human RNase L. 1 and 0.15 ug of extract.



[View online »](#)



RNaseL in transfected cells (0.1 ug) and Hey1B (100 ug), using anti-RNaseL.