

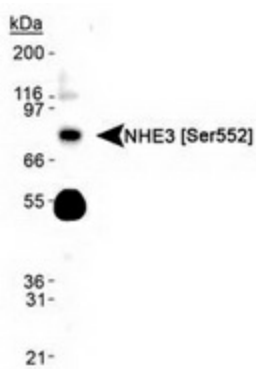
## Product datasheet for TA309871

### SLC9A3 Mouse Monoclonal Antibody [Clone ID: 14D5]

#### Product data:

Product Type:	Primary Antibodies
Clone Name:	14D5
Applications:	WB
Recommend Dilution:	WB, IHC, IF, IP, ELISA
Reactivity:	Human, Mouse, Opossum, Rabbit, Rat
Host:	Mouse
Clonality:	Monoclonal
Immunogen:	Synthetic peptide made to a region surrounding the Serine 552 portion of the rat protein.
Formulation:	Tris-glycine, 150mM NaCl and 0.05% Sodium Azide
Purification:	Protein G purified
Gene Name:	solute carrier family 9 member A3
Database Link:	<a href="#">NP_004165 Entrez Gene 24784 Rat</a> <a href="#">Entrez Gene 105243 Mouse</a> <a href="#">Entrez Gene 6550 Human</a>
Synonyms:	NHE3
Protein Families:	Druggable Genome, Transmembrane

#### Product images:



Western Blot: Sodium / Hydrogen Exchanger 3 [phospho Ser552] Antibody (14D5) - Detection of NHE3 [S552] in human kidney lysate.



[View online »](#)