

Product datasheet for **TA316883**

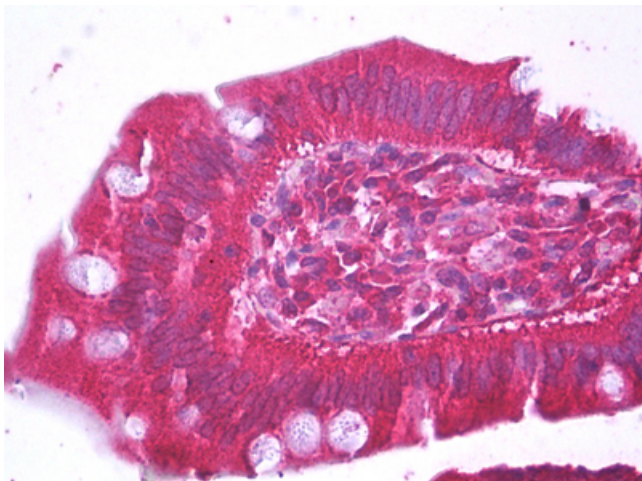
Repulsive Guidance Molecule C (HFE2) Mouse Monoclonal Antibody [Clone ID: 1C12]

Product data:

Product Type:	Primary Antibodies
Clone Name:	1C12
Applications:	IHC
Recommend Dilution:	ELISA, IHC-P (5 µg/ml), WB
Reactivity:	Human
Host:	Mouse
Isotype:	IgG2a, kappa
Clonality:	Monoclonal
Immunogen:	HFE2 / Hemojuvelin antibody was raised against hFE2 (NP_973733, 93 a.a. ~ 174 a.a) partial recombinant protein with GST tag. MW of the GST tag alone is 26 KDa.
Formulation:	PBS, pH 7.2. Sourced in Ascites.
Concentration:	0.5mg/ml
Purification:	Protein A Column
Gene Name:	hemochromatosis type 2 (juvenile)
Database Link:	NP_660320 Entrez Gene 148738 Human
Synonyms:	HFE2A; HJV; JH; RGMC
Note:	Specific for Human HFE2
Protein Families:	Transmembrane



[View online »](#)

Product images:

Anti-HFE2 antibody IHC of human small intestine. Immunohistochemistry of formalin-fixed, paraffin-embedded tissue after heat-induced antigen retrieval. Antibody concentration 5 ug/ml.