

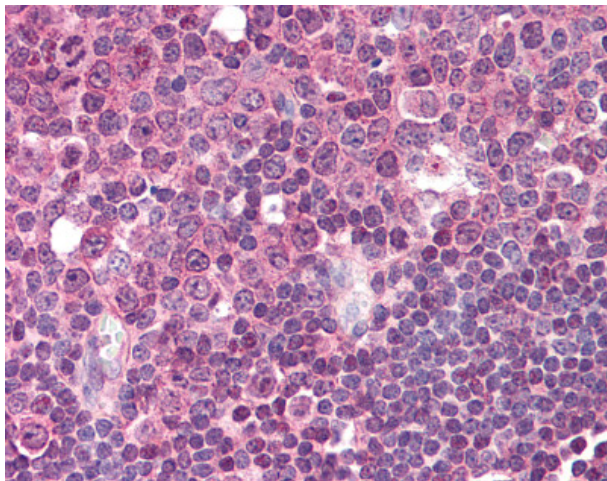
Product datasheet for TA316953

NTAL (LAT2) Mouse Monoclonal Antibody [Clone ID: NAP-03]

Product data:

| | |
|---------------------|---|
| Product Type: | Primary Antibodies |
| Clone Name: | NAP-03 |
| Applications: | IHC |
| Recommend Dilution: | IHC-P (5 µg/ml), IP (1 - 2 µg/ml), WB (1 - 2 µg/ml) |
| Reactivity: | Human |
| Host: | Mouse |
| Isotype: | IgG2a |
| Clonality: | Monoclonal |
| Immunogen: | LAT2 / NTAL antibody was raised against synthetic peptide from human LAT2. |
| Formulation: | PBS, 15 mM sodium azide, approx., pH 7.4. |
| Concentration: | 1 mg/ml |
| Purification: | Protein A Column |
| Gene Name: | linker for activation of T-cells family member 2 |
| Database Link: | NP_054865 Entrez Gene 7462 Human |
| Synonyms: | HSPC046; LAB; NTAL; WBSCR5; WBSCR15; WSCR5 |
| Note: | Specific for Peptide corresponding to aa 196-212 of human NTAL coupled to KLH |
| Protein Families: | Transmembrane |

[View online »](#)

Product images:

Anti-LAT2 antibody IHC of human tonsil.
Immunohistochemistry of formalin-fixed,
paraffin-embedded tissue after heat-induced
antigen retrieval. Antibody concentration 5 ug/ml.