

Product datasheet for TA318002

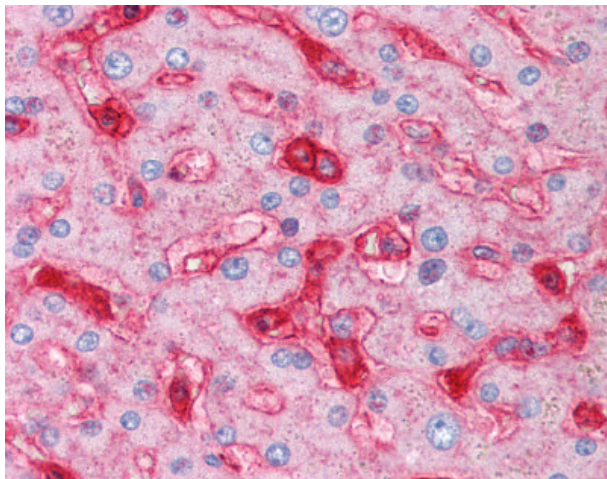
beta 2 Microglobulin (B2M) Mouse Monoclonal Antibody [Clone ID: 2213]

Product data:

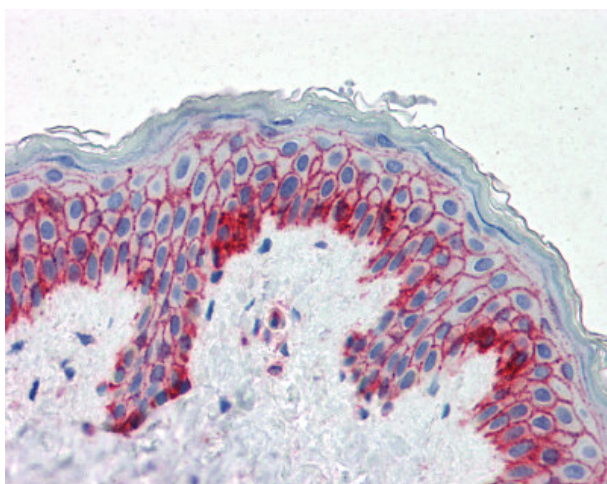
Product Type:	Primary Antibodies
Clone Name:	2213
Applications:	IHC
Recommend Dilution:	ELISA, IHC-P (5 µg/ml)
Reactivity:	Human
Host:	Mouse
Isotype:	IgG1
Clonality:	Monoclonal
Immunogen:	B2M / Beta 2 Microglobulin antibody was raised against highly pure beta-2-microglobulin from human urine.
Formulation:	PBS, pH 8.0, 0.05% sodium azide, 10% glycerol.
Concentration:	1.1mg/ml
Purification:	Protein A Column
Gene Name:	beta-2-microglobulin
Database Link:	NP_004039 Entrez Gene 567 Human
Synonyms:	IMD43
Note:	Specific for human beta 2 microglobulin. B2M is the beta chain of MHC class I molecules. The precursor protein has a molecular weight of approximately 14 kD and is 119 amino acids in length.
Protein Families:	Druggable Genome, Secreted Protein
Protein Pathways:	Antigen processing and presentation



[View online »](#)

Product images:

Anti-B2M antibody IHC of human liver.
Immunohistochemistry of formalin-fixed,
paraffin-embedded tissue after heat-induced
antigen retrieval. Antibody concentration 5 ug/ml.



Anti-B2M antibody IHC of human skin.
Immunohistochemistry of formalin-fixed,
paraffin-embedded tissue after heat-induced
antigen retrieval. Antibody concentration 5 ug/ml.