

## Product datasheet for TA326340

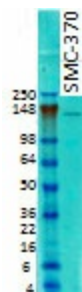
### Caspr (CNTNAP1) Mouse Monoclonal Antibody [Clone ID: S65-35]

#### Product data:

Product Type:	Primary Antibodies
Clone Name:	S65-35
Applications:	IHC, WB
Recommend Dilution:	WB: 1ug/ml, IHC: 0.1-1ug/ml, IF: 1-10ug/ml
Reactivity:	Human, Mouse, Rat
Host:	Mouse
Isotype:	IgG1
Clonality:	Monoclonal
Immunogen:	Fusion protein 1308-1381 (cytoplasmic domain) of rat CASPR
Formulation:	PBS pH7.4, 50% glycerol
Concentration:	1 mg/ml
Purification:	Protein G Purified
Gene Name:	contactin associated protein 1
Database Link:	<a href="#">NP_003623</a> <a href="#">Entrez Gene 53321</a> <a href="#">MouseEntrez Gene 84008</a> <a href="#">RatEntrez Gene 8506</a> <a href="#">Human</a>
Background:	Caspr (contactin-associated protein) is a part of the neurexin family. It lies in the paranodal section of the myelin sheath. Its role is for myelin sheath attachment along with contactin in a cis-complex . Caspr and Caspr2 regulate the formation of distinct axonal domains around the nodes of Ranvier. Caspr is required for the generation of a membrane barrier at the paranodal junction, whereas Caspr serves as a membrane scaffold that clusters Kv1 channels at the juxtaparanodal region. Both interact with protein 4.1B .
Synonyms:	CASPR; CNTNAP; NRXN4; P190
Note:	Detects ~220kDa.
Protein Families:	Druggable Genome, Transmembrane
Protein Pathways:	Cell adhesion molecules (CAMs)



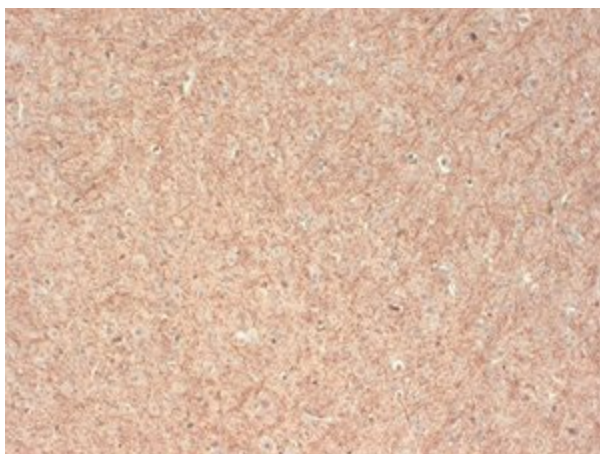
[View online »](#)

**Product images:**

Western blot analysis of CASPR on rat brain membrane tissues using a 1:1000 dilution of the antibody



IHC analysis of CASPR using the antibody



IHC analysis of CASPR using the antibody