

## Product datasheet for TA327680

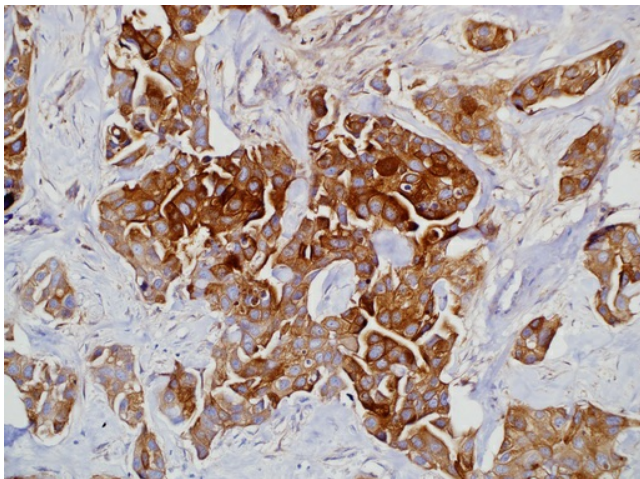
### GCDFP 15 (PIP) Mouse Monoclonal Antibody [Clone ID: 23A3]

#### Product data:

Product Type:	Primary Antibodies
Clone Name:	23A3
Applications:	IHC
Recommend Dilution:	IHC: 1:50 - 1:200
Reactivity:	Human
Host:	Mouse
Isotype:	IgG2a
Clonality:	Monoclonal
Formulation:	The antibody is diluted in tris buffered saline, pH 7.3-7.7, with 1% BSA and <1% sodium azide.
Purification:	Affinity purification
Gene Name:	prolactin induced protein
Database Link:	<a href="#">NP_002643 Entrez Gene 5304 Human</a>
Synonyms:	GCDFP-15; GCDFP15; GPI4
Note:	GCDFP-15 is a 15 kD glycoprotein which is localized in the apocrine metaplastic epithelium lining breast cysts and in apocrine glands in the axilla, vulva, eyelid, and ear canal. Approximately 70% of breast carcinomas stain positive with antibody to GCDFP-15. Anti-GCDFP-15 is the most specific marker for breast carcinoma. Colorectal carcinomas, lung carcinoma, and mesotheliomas usually do not stain with this antibody. Lung adenocarcinoma rarely stains with this antibody.
Protein Families:	Secreted Protein



[View online »](#)

**Product images:**

Immunohistochemistry staining of Paraffin Breast, breast carcinoma tissue by GCDFP-15 antibody (dilution: 1:50 - 1:200; visualization of staining: Cytoplasmic)