

Product datasheet for TA327946

MMP1 Mouse Monoclonal Antibody [Clone ID: F15P3B6]

Product data:

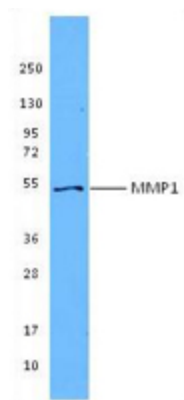
Product Type:	Primary Antibodies
Clone Name:	F15P3B6
Applications:	WB
Recommend Dilution:	WB, IHC
Reactivity:	Human
Host:	Mouse
Isotype:	IgG1, kappa
Clonality:	Monoclonal
Immunogen:	Ovalbumin-conjugated synthetic peptide CSSFGFPRTVKH
Formulation:	This antibody is provided in phosphate-buffered solution, pH 7.2, containing 0.09% sodium azide at 0.5 mg/ml.
Concentration:	0.5 mg/ml
Purification:	The antibody was purified by affinity chromatography.
Predicted Protein Size:	54 kD
Gene Name:	matrix metalloproteinase 1
Database Link:	NP_002412 Entrez Gene 4312 Human
Background:	Matrix metalloproteinases (MMPs) are zinc-dependent endopeptidases that degrade substances within the extracellular matrix. The MMP family includes six different groups of enzymes: collagenases, gelatinases, stromelysins, transmembrane MMPs, matrilysins and others. MMPs are secreted as proenzymes that have to be cleaved in order to be activated. Other MMPs, plasmins as well as other factors activate MMPs. MMPs are thought to play an important role in tissue remodeling associated with various physiological and pathological processes. MMP1 cleaves collagens of types I, II, III, VII and X. MMP1 is thought to play an important role in rheumatoid and osteo-arthritis pathogenesis as mediators of cartilage and bone destruction. Clone F15P3B6 has been shown to be useful for western blotting and immunohistochemistry of human MMP1.
Synonyms:	CLG; CLGN
Protein Families:	Druggable Genome, Protease, Secreted Protein



[View online »](#)

Protein Pathways: Bladder cancer, Pathways in cancer, PPAR signaling pathway

Product images:



Recombinant MMP1 was resolved by electrophoresis, transferred to nitrocellulose, and probed with purified anti-MMP1 antibody (clone F15P3B6). Proteins were visualized using a goat anti-mouse IgG secondary conjugated to HRP and chemiluminescence detection.