

## Product datasheet for TA336277

### SMN1 Mouse Monoclonal Antibody [Clone ID: 2B1]

#### Product data:

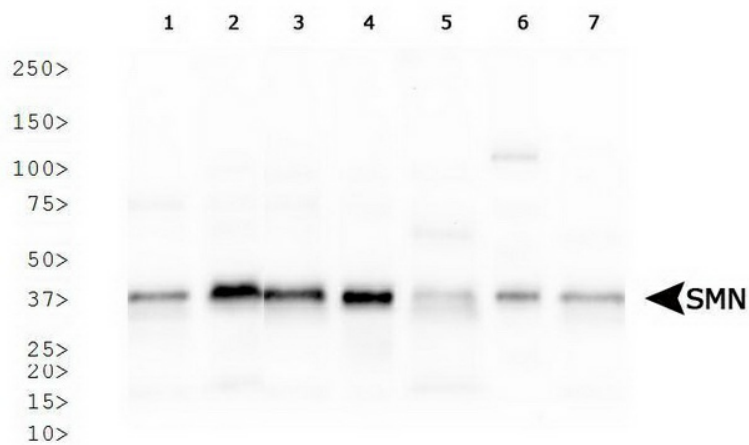
Product Type:	Primary Antibodies
Clone Name:	2B1
Applications:	IF, IHC, WB
Recommend Dilution:	WB: 2 ug/ml, ELISA: , IF: 1:250, IHC-P: 1:200, IP: 1:10-1:500
Reactivity:	Human, Mouse, Primate, Rat, Xenopus
Host:	Mouse
Isotype:	IgG1
Clonality:	Monoclonal
Immunogen:	Purified recombinant His6-tagged human SMN protein. [Swiss-Prot# Q16637]
Formulation:	PBS containing 0.05% BSA, 0.05% Sodium Azide. Store at 4C short term. Aliquot and store at -20C long term. Avoid freeze-thaw cycles.
Concentration:	1 mg/ml
Purification:	Protein G purified
Gene Name:	survival of motor neuron 1, telomeric
Database Link:	<a href="#">NP_075012 Entrez Gene 20595 Mouse</a> <a href="#">Entrez Gene 64301 Rat</a> <a href="#">Entrez Gene 6606 Human</a>
Background:	Spinal muscular atrophy (SMA) is a common fatal autosomal recessive disorder characterized by the degeneration of motor neurons and muscular atrophy. A gene called Survival of Motor Neurons (SMN) has been identified as the determining gene in SMA and is deleted or mutated in greater than 98% of SMA patients. The SMN protein localizes to both the cytoplasm and the nucleus. In the nucleus, SMN has been found to localize in a nuclear structure termed gems for Gemini of coiled bodies, which contain high levels of small ribonucleoproteins (snRNPs). SMN forms complexes with proteins including SIP1, Gemin 2-7 and several others known to be involved in the biogenesis of snRNPs. SMN antibodies may serve as a useful research tool to study SMN complexes and gems, and their role in pre-RNA processing and RNA metabolism.
Synonyms:	BCD541; GEMIN1; SMA; SMA1; SMA2; SMA3; SMA4; SMA@; SMN; SMNT; T-BCD541; TDRD16A


[View online »](#)

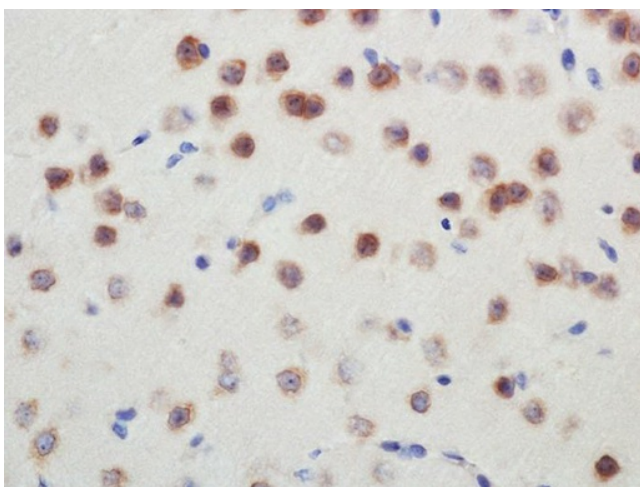
**Note:** This SMN Antibody (2B1) is useful for Immunocytochemistry/Immunofluorescence, Immunohistochemistry on paraffin-embedded sections, Flow Cytometry, Immunoprecipitation and Western blot where a band can be seen at ~ 35 kDa. Use in ELISA reported in scientific literature (PMID 23973875)

**Protein Families:** Druggable Genome, Stem cell - Pluripotency

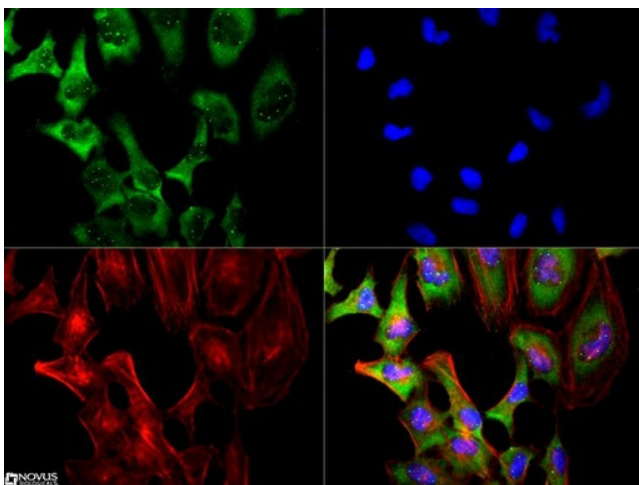
**Product images:**



Western Blot: SMN Antibody (2B1) TA336277 - Western blot analysis of SMN expression in 1) HeLa, 2) Ntera2, 3) HepG2, 4) MCF7, 5) NIH 3T3, 6) PC12 and 7) COS7 whole cell lysates.



Immunohistochemistry: SMN Antibody (2B1) TA336277 - Immunohistochemical analysis of SMN on mouse brain using TA336277.



Immunocytochemistry/Immunofluorescence:  
SMN Antibody (2B1) TA336277 - The SMN antibody was tested at a 1:250 dilution in HeLa cells against Dylight 488 (Green). Actin nuclei were counterstained against Phalloidin 568 (Red) and DAPI (Blue), respectively.