

## Product datasheet for TA336754

### beta III Tubulin (TUBB3) Mouse Monoclonal Antibody [Clone ID: 2E9]

#### Product data:

Product Type:	Primary Antibodies
Clone Name:	2E9
Applications:	FC, IF, WB
Recommend Dilution:	WB: 1:500-1:2000, ELISA: 1:10000, FC: 1:200-1:400, IF: 1:200-1:1000
Reactivity:	Human
Host:	Mouse
Isotype:	IgG1
Clonality:	Monoclonal
Immunogen:	Purified recombinant fragment of human Tubulin Beta 3 expressed in E. coli. [UniProt# Q13509]
Formulation:	Preservative: 0.05% Sodium Azide. Aliquot and store at -20C or -80C. Avoid freeze-thaw cycles.
Concentration:	This product is unpurified. The exact concentration of antibody is not quantifiable.
Purification:	Ascites
Predicted Protein Size:	50 kDa
Gene Name:	tubulin beta 3 class III
Database Link:	<a href="#">NP_006077</a> <a href="#">Entrez Gene 10381</a> <a href="#">Human</a>
Background:	Tubulin Beta 3 is abundant in the central and peripheral nervous systems (CNS and PNS) where it is prominently expressed during fetal and postnatal development. As exemplified in cerebellar and sympathoadrenal neurogenesis, the distribution of Tubulin Beta 3 is neuron-associated, exhibiting distinct temporospatial gradients according to the regional neuroepithelia of origin. However, transient expression of this protein is also present in the subventricular zones of the CNS comprising putative neuronal- and/or glial precursor cells, as well as in Kulchitsky neuroendocrine cells of the fetal respiratory epithelium. This temporally restricted, potentially non-neuronal expression may have implications in the identification of presumptive neurons derived from embryonic stem cells. In adult tissues, the distribution of Tubulin Beta 3 is almost exclusively neuron-specific.
Synonyms:	beta-4; CDCBM; CDCBM1; CFEOM3; CFEOM3A; FEOM3; TUBB4



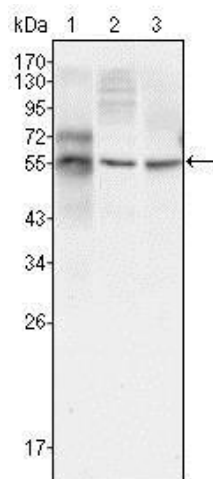
[View online »](#)

**Note:** This Tubulin Beta 3 (2E9) antibody is useful in Western Blot, Immunocytochemistry/Immunofluorescence, Flow cytometry and ELISA.

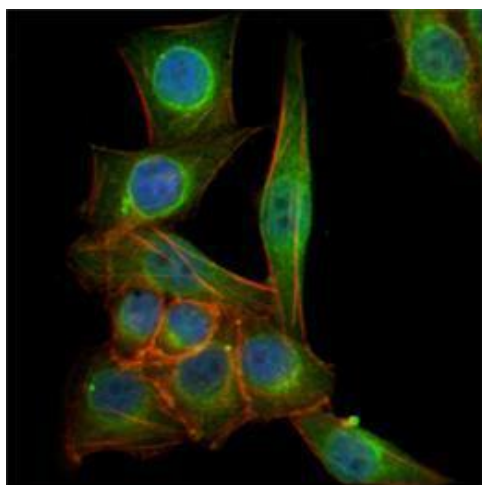
**Protein Families:** Druggable Genome, ES Cell Differentiation/IPS

**Protein Pathways:** Gap junction, Pathogenic Escherichia coli infection

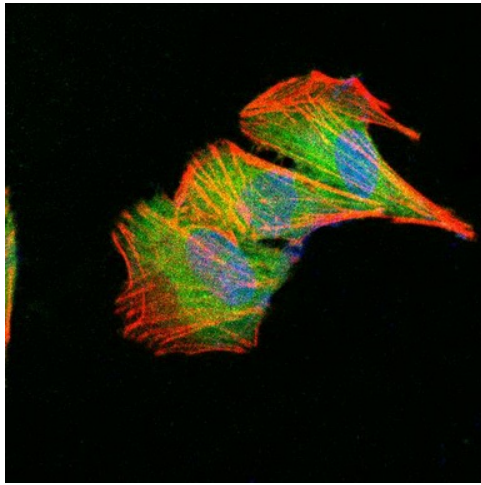
**Product images:**



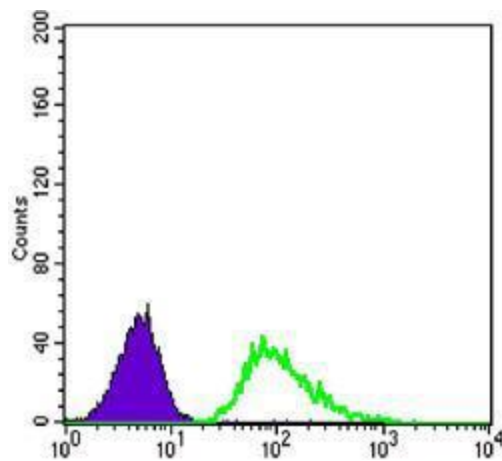
Western Blot: Tubulin Beta 3 Antibody (2E9) TA336754 - Analysis of Tubulin Beta 3 mouse mAb against HepG2 (1), A549 (2) and HeLa (3) cell lysates.



Immunocytochemistry/Immunofluorescence: Tubulin Beta 3 Antibody (2E9) TA336754 - Analysis of PANC-1 cells using Tubulin Beta 3 mouse mAb (green). Blue: DRAQ5 fluorescent DNA dye. Red: Actin filaments have been labeled with Alexa Fluor-555 phalloidin.



Immunocytochemistry/Immunofluorescence:  
Tubulin Beta 3 Antibody (2E9) TA336754 - IF  
Confocal analysis of SHSY5Y cells using Tubulin  
Beta 3 antibody (TA336754, 1:5). An Alexa Fluor  
488-conjugated Goat to mouse IgG was used as  
secondary antibody (green).



Flow Cytometry: Tubulin Beta 3 Antibody (2E9)  
TA336754 - Analysis of A549 cells using anti-  
Tubulin Beta 3 mAb (green) and negative control  
(purple).