

Product datasheet for TA336770

beta Actin (ACTB) Mouse Monoclonal Antibody [Clone ID: 8H10D10]

Product data:

Product Type:	Primary Antibodies
Clone Name:	8H10D10
Applications:	FC, IF, WB
Recommend Dilution:	WB: 1:1000-1:5000, ELISA: 1:10000, FC: 1:200-1:400, IF: 1:200-1:1000
Reactivity:	Hamster, Human, Mouse, Primate, Rat
Host:	Mouse
Isotype:	IgG2b
Clonality:	Monoclonal
Immunogen:	Synthetic peptide corresponding to amino-terminal residues of human Beta Actin, conjugated to KLH. [UniProt# P60709]
Formulation:	PBS, 0.03% Sodium Azide. Store at 4C short term. Aliquot and store at -20C long term. Avoid freeze-thaw cycles.
Concentration:	1 mg/ml
Purification:	Ammonium sulfate precipitation
Predicted Protein Size:	42 kDa
Gene Name:	actin, beta
Database Link:	NP_001092 Entrez Gene 11461 Mouse Entrez Gene 81822 Rat Entrez Gene 60 Human
Background:	Beta Actin is one of six different actin isoforms which have been identified. Actins are highly conserved proteins that are involved in cell motility, structure, and integrity. Because Beta Actin is ubiquitously expressed in all eukaryotic cells, it is frequently used as a loading control for assays involving protein detection, such as Western blotting. Antibodies to Beta Actin provide a specific and useful tool in studying the intracellular distribution of Beta Actin and the static and dynamic aspects of the cytoskeleton.
Synonyms:	BRWS1; PS1TP5BP1
Note:	This Beta Actin (8H10D10) antibody is useful in Western blot, Flow Cytometry, Immunocytochemistry/Immunofluorescence and ELISA.
Protein Families:	ES Cell Differentiation/IPS

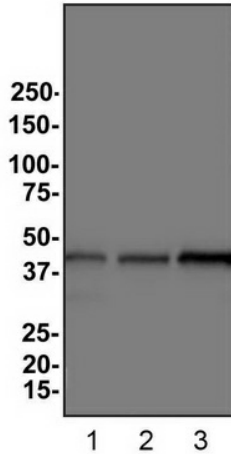


[View online »](#)

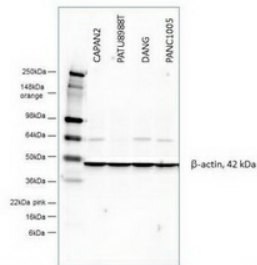
Protein Pathways:

Adherens junction, Arrhythmogenic right ventricular cardiomyopathy (ARVC), Dilated cardiomyopathy, Focal adhesion, Hypertrophic cardiomyopathy (HCM), Leukocyte transendothelial migration, Pathogenic Escherichia coli infection, Regulation of actin cytoskeleton, Tight junction, Vibrio cholerae infection, Viral myocarditis

Product images:

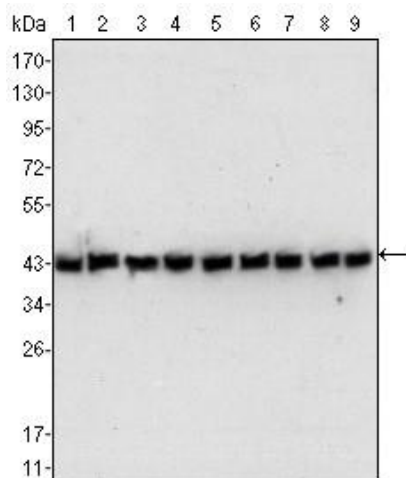


Western Blot: Beta Actin Antibody (8H10D10) TA336770 - Analysis of Beta Actin expression in 1) HeLa 2) HepG2 and 3) Cos7 whole cell lysates.

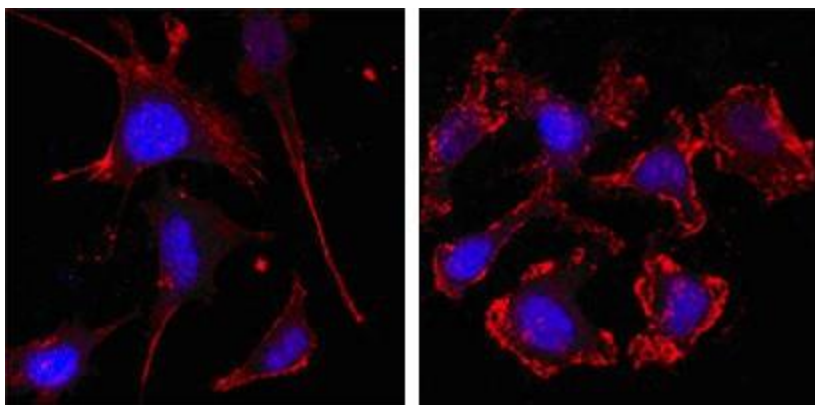


Primary antibody β -actin: Novusbio cat#NB7539 mouse monoclonal, 1:1000, 42kDa
Secondary antibody: Novus Cat#NB7539 LotA33

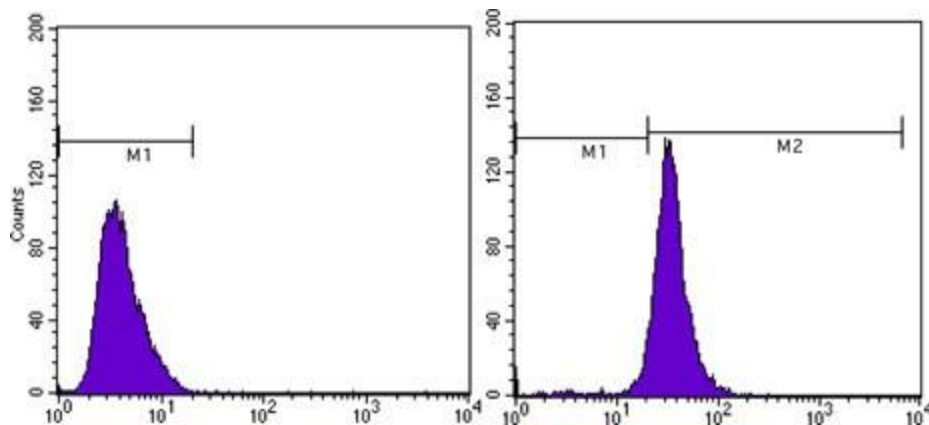
Western Blot: Beta Actin Antibody (8H10D10) TA336770 - Pancreatic cell lines. Image from verified customer review.



Western Blot: Beta Actin Antibody (8H10D10) TA336770 - Western blot analysis using anti-Beta Actin mAb against NIH/3T3 (1), Jurkat (2), Hela (3), CHO (4), PC12 (5), HEK293 (6), COS (7), A549 (8) and MCF-7 (9) cell lysates.



Immunocytochemistry/Immunofluorescence: Beta Actin Antibody (8H10D10) TA336770 - Confocal immunofluorescence analysis of SK-BR-3 (left) and A549 (right) cells using anti-Beta Actin mAb (red, the secondary Ab is Cy3-Goat anti mouse IgG). Blue: DRAQ5 fluo



Flow Cytometry: Beta Actin Antibody (8H10D10) TA336770 - Flow cytometric analysis of MCF-7 cells using anti-Beta Actin mAb (right) and negative control (left).