

Product datasheet for TA336912

Apolipoprotein E (APOE) Mouse Monoclonal Antibody [Clone ID: 1H4]

Product data:

Product Type:	Primary Antibodies
Clone Name:	1H4
Applications:	ELISA, FC, IHC, WB
Recommend Dilution:	WB: 1:500-1:2000, ELISA: 1:10000, FC: 1:200-1:400, IHC-P: 1:200-1:1000
Reactivity:	Human
Host:	Mouse
Isotype:	IgG1
Clonality:	Monoclonal
Immunogen:	Purified recombinant fragment of human ApoE expressed in E. coli. [UniProt# P02649]
Formulation:	Preservative: 0.05% Sodium Azide. Aliquot and store at -20C or -80C. Avoid freeze-thaw cycles.
Concentration:	This product is unpurified. The exact concentration of antibody is not quantifiable.
Purification:	Ascites
Predicted Protein Size:	36 kDa
Gene Name:	apolipoprotein E
Database Link:	NP_000032 Entrez Gene 348 Human
Background:	Chylomicron remnants and very low density lipoprotein (VLDL) remnants are rapidly removed from the circulation by receptor-mediated endocytosis in the liver. Apolipoprotein E, a main apoprotein of the chylomicron, binds to a specific receptor on liver cells and peripheral cells. ApoE is essential for the normal catabolism of triglyceride-rich lipoprotein constituents. The APOE gene is mapped to chromosome 19 in a cluster with APOC1 and APOC2. Defects in apolipoprotein E result in familial dysbetalipoproteinemia, or type III hyperlipoproteinemia (HLP III), in which increased plasma cholesterol and triglycerides are the consequence of impaired clearance of chylomicron and VLDL remnants. Tissue specificity: Occurs in all lipoprotein fractions in plasma. It constitutes 10-20% of very low density lipoproteins (VLDL) and 1-2% of high density lipoproteins (HDL). APOE is produced in most organs. Significant quantities are produced in liver, brain, spleen, lung, adrenal, ovary, kidney and muscle.
Synonyms:	AD2; APO-E; LDLQC5; LPG



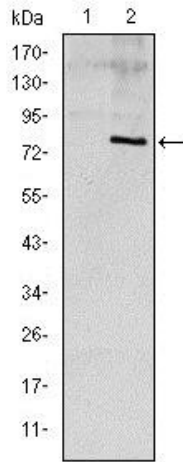
[View online »](#)

Note: This ApoE (1H4) antibody is useful for Western blot, Immunohistochemistry on paraffin-embedded sections, Flow Cytometry and ELISA.

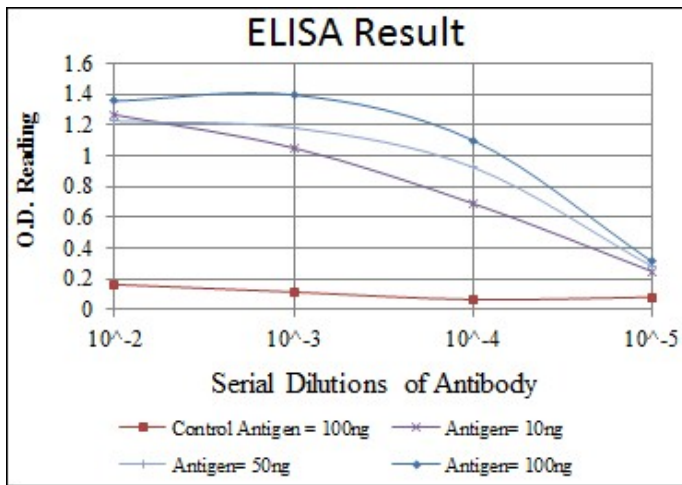
Protein Families: Adult stem cells, Druggable Genome, Secreted Protein, Stem cell - Pluripotency

Protein Pathways: Alzheimer's disease

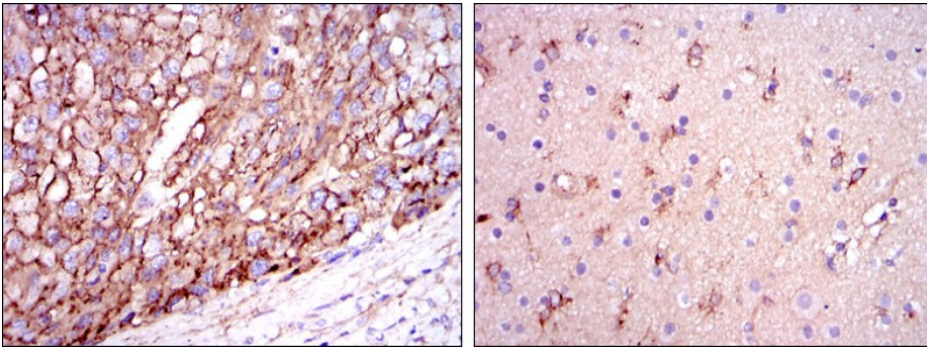
Product images:



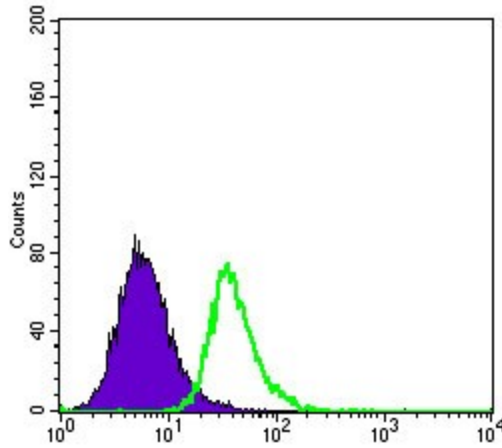
Western Blot: ApoE Antibody (1H4) TA336912 - Western blot analysis using ApoE mAb against HEK293 (1) and ApoE (AA: 20-267)-hlgGfc transfected HEK293 (2) cell lysate.



ELISA: ApoE Antibody (1H4) TA336912 - Red: Control Antigen (100ng); Purple: Antigen (10ng); Green: Antigen (50ng); Blue: Antigen (100ng).



Immunohistochemistry-Paraffin: ApoE Antibody (1H4) TA336912 - Immunohistochemical analysis of paraffin-embedded liver cancer tissues (left) and brain tissues (right) using ApoE mouse mAb with DAB staining.



Flow Cytometry: ApoE Antibody (1H4) TA336912 - Flow cytometric analysis of HepG2 cells using ApoE mouse mAb (green) and negative control (purple).