

## Product datasheet for **TA336942**

### CRLF2 Mouse Polyclonal Antibody

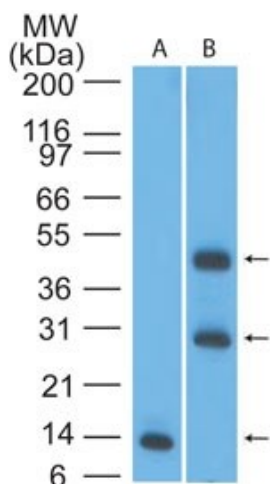
#### Product data:

|                     |  |
|---------------------|--|
| Product Type:       | Primary Antibodies   |
| Applications:       | IHC, WB  |
| Recommend Dilution: | WB: 1-5 ug/ml, IHC: 1:10-1:500, IHC-P: 5-7 ug/ml   |
| Reactivity:         | Human  |
| Host:               | Mouse  |
| Isotype:            | IgG2b, kappa   |
| Clonality:          | Polyclonal   |
| Immunogen:          | Amino acids 119-231 of human TSLPR protein were used as the immunogen for the antibody.  |
| Formulation:        | PBS containing 0.05% BSA, 0.05% Sodium Azide. Store at 4C short term. Aliquot and store at -20C long term. Avoid freeze-thaw cycles.                           |
| Concentration:      | Please see the vial label for concentration. If unlisted please contact technical services.  |
| Purification:       | Protein G purified   |
| Gene Name:          | cytokine receptor-like factor 2  |
| Database Link:      | <a href="#">NP_071431</a> <a href="#">Entrez Gene 64109</a> <a href="#">Human</a>  |
| Synonyms:           | CRL2; CRLF2Y; TSLPR  |
| Note:               | TSLPR is a glycoprotein with two major isoforms of 359 amino acids and 255 amino acids. In western blotting, bands may be visualized between 27 kD and ~50 kD. |
| Protein Families:   | Druggable Genome, Secreted Protein, Transmembrane  |
| Protein Pathways:   | Cytokine-cytokine receptor interaction, Jak-STAT signaling pathway   |

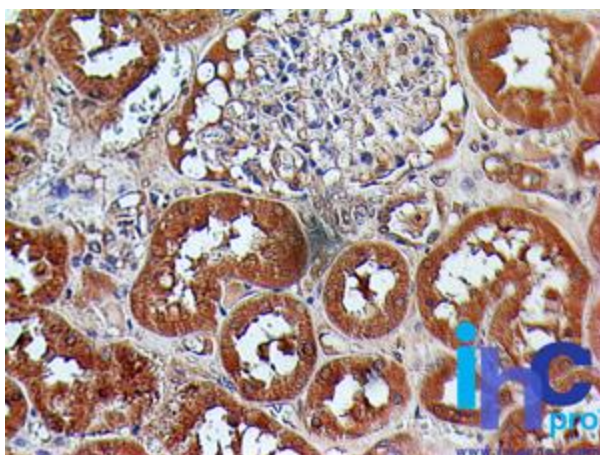


[View online »](#)

## Product images:



Western Blot: CRLF2 Antibody TA336942 - analysis of TSLPR in an A) partial recombinant protein (0.1 ug/ml) and B) human liver lysate (2ug/ml) using TSLPR antibody.



Immunohistochemistry-Paraffin: CRLF2 Antibody TA336942 - paraffin-embedded normal human kidney tissue stained with TSLPR antibody (5 ug/ml), peroxidase-conjugate and DAB chromogen.