

## Product datasheet for TA347043

### SAFB Mouse Monoclonal Antibody [Clone ID: 2E8-E2-G6]

#### Product data:

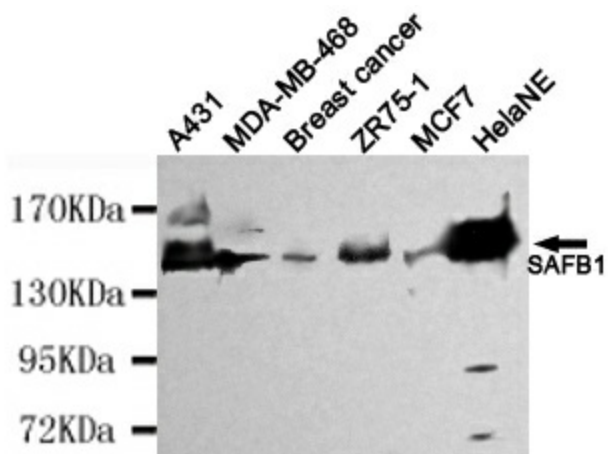
Product Type:	Primary Antibodies
Clone Name:	2E8-E2-G6
Applications:	IF, WB
Recommend Dilution:	WB: 1:1000, IF: 1:200
Reactivity:	Human
Host:	Mouse
Isotype:	IgG1
Clonality:	Monoclonal
Immunogen:	The immunogen for SAFB-1 antibody: purified recombinant human SAFB1 protein fragments expressed in E.coli.
Formulation:	Purified mouse monoclonal antibody in buffer containing 0.1M Tris-Glycine (pH 7.4, 150 mM NaCl) with 0.02% sodium azide, 50% glycerol
Purification:	Affinity purified
Predicted Protein Size:	130 kDa
Gene Name:	scaffold attachment factor B
Database Link:	<a href="#">NP_002958 Entrez Gene 6294 Human</a>
Background:	This gene encodes a DNA-binding protein which has high specificity for scaffold or matrix attachment region DNA elements (S/MAR DNA). This protein is thought to be involved in attaching the base of chromatin loops to the nuclear matrix but there is conflicting evidence as to whether this protein is a component of chromatin or a nuclear matrix protein. Scaffold attachment factors are a specific subset of nuclear matrix proteins (NMP) that specifically bind to S/MAR. The encoded protein is thought to serve as a molecular base to assemble a 'transcriptosome complex' in the vicinity of actively transcribed genes. It is involved in the regulation of heat shock protein 27 transcription, can act as an estrogen receptor co-repressor and is a candidate for breast tumorigenesis. This gene is arranged head-to-head with a similar gene whose product has the same functions. Multiple transcript variants encoding different isoforms have been found for this gene.
Synonyms:	HAP; HET; SAB-B1; SAF-B; SAF-B1; SAFB1



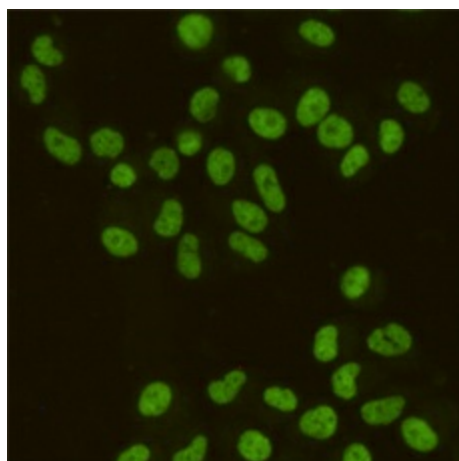
[View online »](#)

Protein Families: Druggable Genome, Transcription Factors

### Product images:



Western blot detection of SAFB1 in HeLaNE, A431, MDA-MB-468, Breast cancer, ZR75-1 and MCF7 cell lysates using SAFB1 mouse mAb (1:4000 diluted). Predicted band size: 130kDa. Observed band size: 130kDa.



Immunocytochemistry staining of HeLa cells fixed with 4% Paraformaldehyde and using SAFB1 mouse mAb (dilution 1:200).