

## Product datasheet for TA347062

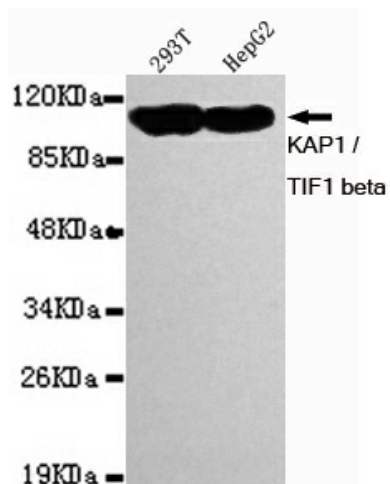
### KAP1 (TRIM28) Mouse Monoclonal Antibody [Clone ID: 4E1-D12-F8]

#### Product data:

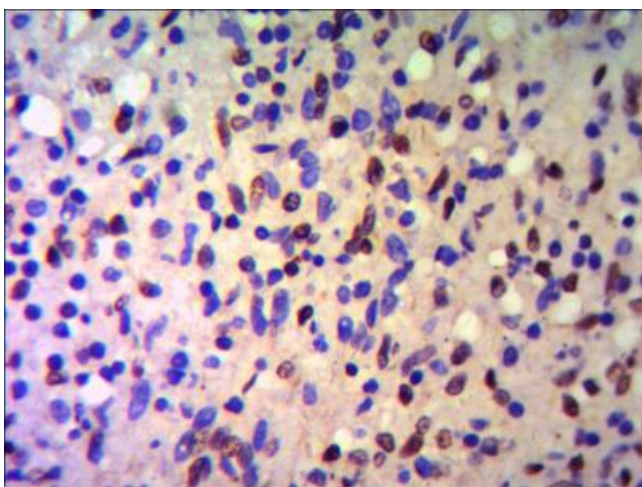
Product Type:	Primary Antibodies
Clone Name:	4E1-D12-F8
Applications:	IF, IHC, IP, WB
Recommend Dilution:	WB: 1:1000, IF: 1:100
Reactivity:	Human
Host:	Mouse
Isotype:	IgG1
Clonality:	Monoclonal
Immunogen:	The immunogen for TRIM28 antibody: purified recombinant human KAP1 / TIF1 beta protein fragments expressed in E.coli.
Formulation:	Purified mouse monoclonal in buffer containing 0.1M Tris-Glycine (pH 7.4, 150 mM NaCl) with 0.02% sodium azide, 50% glycerol
Purification:	Affinity purified
Predicted Protein Size:	110 kDa
Gene Name:	tripartite motif containing 28
Database Link:	<a href="#">NP_005753</a> <a href="#">Entrez Gene 10155</a> <a href="#">Human</a>
Background:	The protein encoded by this gene mediates transcriptional control by interaction with the Kruppel-associated box repression domain found in many transcription factors. The protein localizes to the nucleus and is thought to associate with specific chromatin regions. The protein is a member of the tripartite motif family. This tripartite motif includes three zinc-binding domains, a RING, a B-box type 1 and a B-box type 2, and a coiled-coil region.
Synonyms:	KAP1; PPP1R157; RNF96; TF1B; TIF1B
Protein Families:	Protein Kinase, Stem cell - Pluripotency, Transcription Factors

[View online »](#)

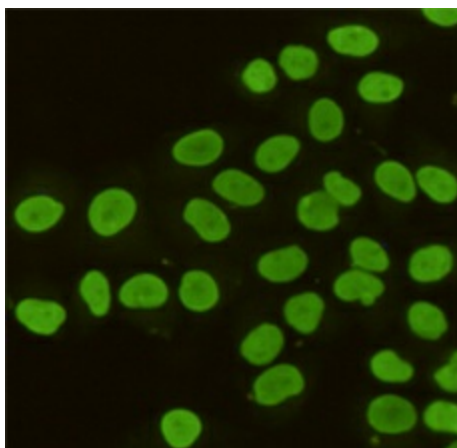
## Product images:



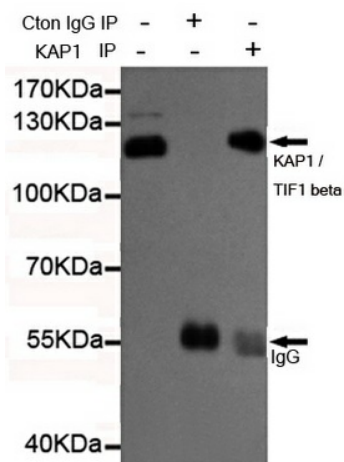
Western blot detection of KAP1 / TIF1 beta in 293T and HepG2 cell lysates using KAP1 / TIF1 beta mouse mAb (1:1000 diluted). Observed band size: 110KDa.



IHC of paraffin-embedded human Spleen using anti-KAP1 / TIF1 beta diluted 1/500-1/1000.



Immunocytochemistry staining of HeLa cells fixed with 4% Paraformaldehyde and using anti-KAP1 / TIF1 beta mouse mAb (dilution 1:100).



Immunoprecipitation analysis of HeLa cell lysates using KAP1 / TIF1 beta mouse mAb.