

Product datasheet for TA500030

Neurotrophin 3 (NTF3) Mouse Monoclonal Antibody [Clone ID: OTI5A2]

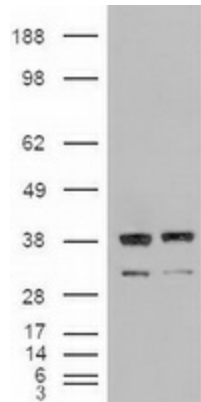
Product data:

Product Type:	Primary Antibodies
Clone Name:	OTI5A2
Applications:	IHC, WB
Recommend Dilution:	WB: 1:5000, IHC 1:50, IF (1:100)
Reactivity:	Human
Host:	Mouse
Isotype:	IgG1
Clonality:	Monoclonal
Immunogen:	Recombinant protein expressed in E.coli corresponding to amino acids 139-257 of human NT3
Formulation:	PBS (pH 7.3) containing 1% BSA, 50% glycerol and 0.02% sodium azide.
Concentration:	1.5 mg/ml
Purification:	Purified from mouse ascites fluids or tissue culture supernatant by affinity chromatography (protein A/G)
Predicted Protein Size:	27.4 kDa
Gene Name:	neurotrophin 3
Database Link:	NP_001096124 Entrez Gene 4908 Human
Background:	NT3 is a member of the neurotrophin family, that controls survival and differentiation of mammalian neurons. It is closely related to both nerve growth factor and brain-derived neurotrophic factor. It may be involved in the maintenance of the adult nervous system, and may affect development of neurons in the embryo when it is expressed in human placenta. NT3-deficient mice generated by gene targeting display severe movement defects of the limbs. The mature peptide of this protein is identical in all mammals examined including human, pig, rat and mouse
Synonyms:	HDNF; NGF-2; NGF2; NT-3; NT3
Protein Families:	Druggable Genome, Secreted Protein
Protein Pathways:	MAPK signaling pathway, Neurotrophin signaling pathway

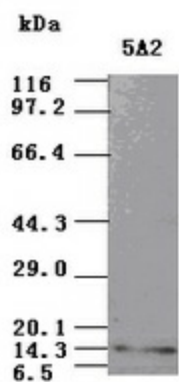


[View online »](#)

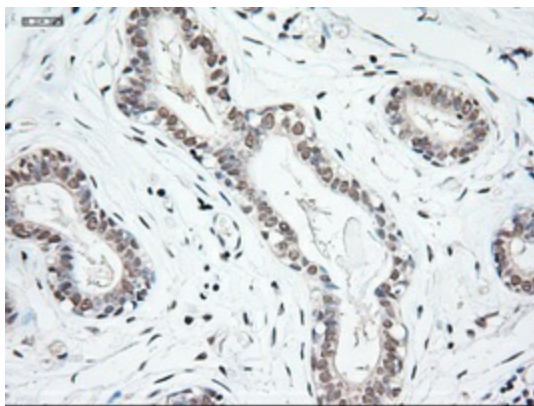
Product images:



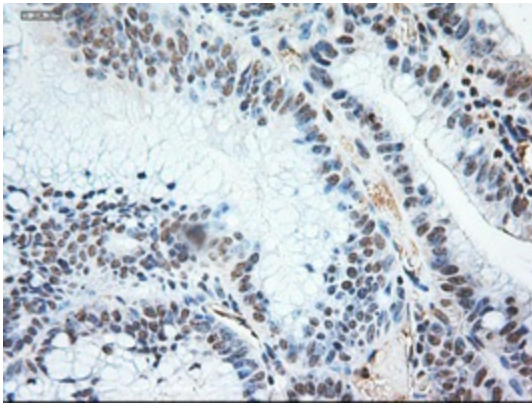
HEK293T cells were transfected with the pCMV6-ENTRY control (Left lane) or pCMV6-ENTRY NTF3 [RC214281], Right lane) cDNA for 48 hrs and lysed. Equivalent amounts of cell lysates (5 ug per lane) were separated by SDS-PAGE and immunoblotted with anti-NTF3. Positive lysates [LY420181] (100ug) and [LC420181] (20ug) can be purchased separately from OriGene.



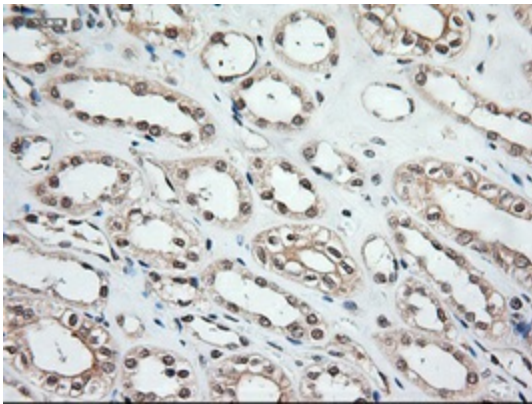
NT3 antibody (5A2) at 1:5000 + Mature Recombinant Human NT3 (14kDa) (Cat# [RC214281])



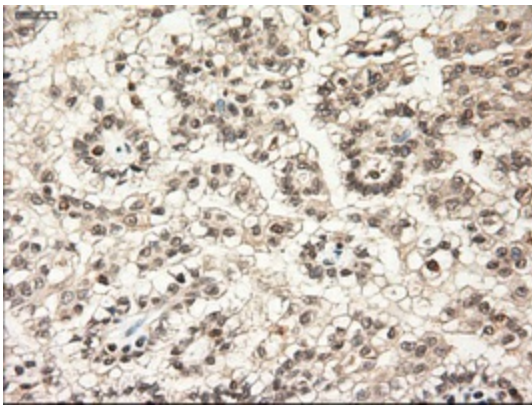
Immunohistochemical staining of paraffin-embedded breast within the normal limits using anti-NTF3 (TA500030) mouse monoclonal antibody (Heat-induced epitope retrieval by 10mM citric buffer, pH6.0, 100°C for 10min).



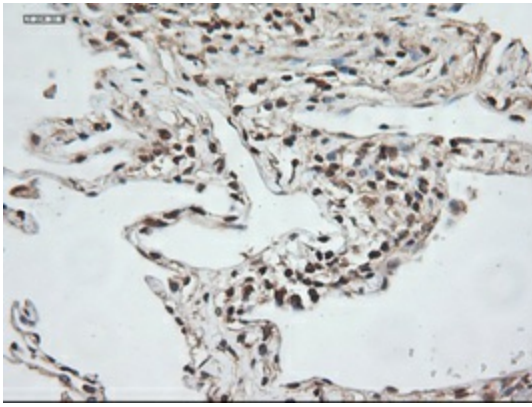
Immunohistochemical staining of paraffin-embedded Adenocarcinoma of colon using anti-NTF3 (TA500030) mouse monoclonal antibody (Heat-induced epitope retrieval by 10mM citric buffer, pH6.0, 100°C for 10min).



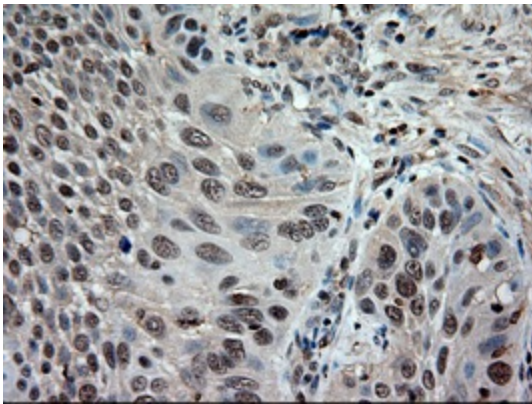
Immunohistochemical staining of paraffin-embedded kidney within the normal limits using anti-NTF3 (TA500030) mouse monoclonal antibody (Heat-induced epitope retrieval by 10mM citric buffer, pH6.0, 100°C for 10min).



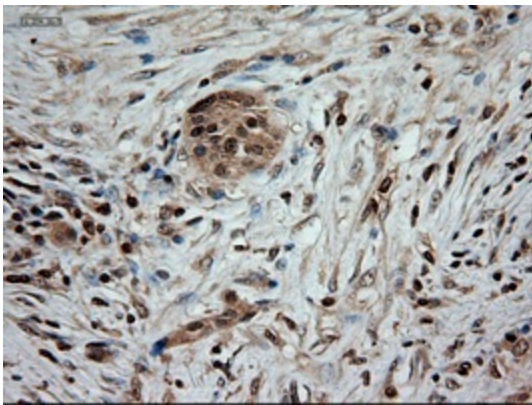
Immunohistochemical staining of paraffin-embedded Carcinoma of kidney using anti-NTF3 (TA500030) mouse monoclonal antibody (Heat-induced epitope retrieval by 10mM citric buffer, pH6.0, 100°C for 10min).



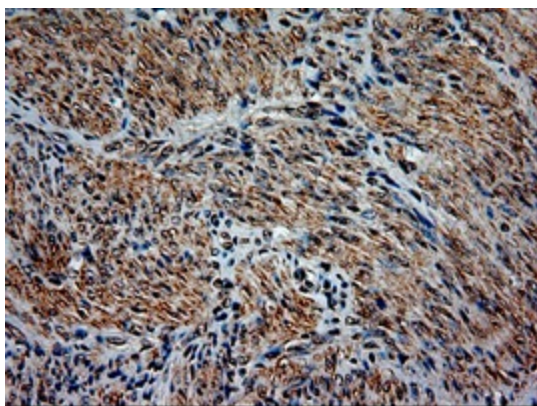
Immunohistochemical staining of paraffin-embedded lung within the normal limits using anti-NTF3 (TA500030) mouse monoclonal antibody (Heat-induced epitope retrieval by 10mM citric buffer, pH6.0, 100°C for 10min).



Immunohistochemical staining of paraffin-embedded Carcinoma of lung using anti-NTF3 (TA500030) mouse monoclonal antibody (Heat-induced epitope retrieval by 10mM citric buffer, pH6.0, 100°C for 10min).



Immunohistochemical staining of paraffin-embedded Carcinoma of pancreas using anti-NTF3 (TA500030) mouse monoclonal antibody (Heat-induced epitope retrieval by 10mM citric buffer, pH6.0, 100°C for 10min).



Immunohistochemical staining of paraffin-embedded endometrium within the normal limits using anti-NTF3 (TA500030) mouse monoclonal antibody (Heat-induced epitope retrieval by 10mM citric buffer, pH6.0, 100°C for 10min).