

Product datasheet for TA500052

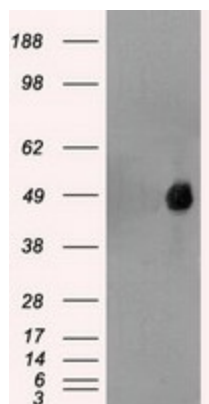
FOXA1 Mouse Monoclonal Antibody [Clone ID: OTI3C1]

Product data:

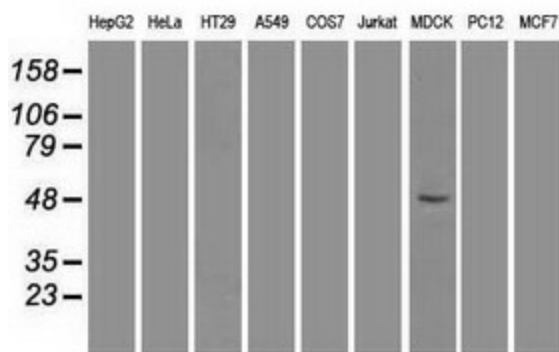
Product Type:	Primary Antibodies
Clone Name:	OTI3C1
Applications:	WB
Recommend Dilution:	WB 1:500~1000
Reactivity:	Human, Dog
Host:	Mouse
Isotype:	IgG2b
Clonality:	Monoclonal
Immunogen:	Full length human recombinant protein of human FOXA1 (NP_004487) produced in E.coli.
Formulation:	PBS (pH 7.3) containing 1% BSA, 50% glycerol and 0.02% sodium azide.
Concentration:	2 mg/ml
Purification:	Purified from mouse ascites fluids or tissue culture supernatant by affinity chromatography (protein A/G)
Predicted Protein Size:	49.0 kDa
Gene Name:	forkhead box A1
Database Link:	NP_004487 Entrez Gene 490657 DogEntrez Gene 3169 Human
Background:	FOXA1 is a member of the forkhead class of DNA-binding proteins. These hepatocyte nuclear factors are transcriptional activators for liver-specific transcripts such as albumin and transthyretin, and they also interact with chromatin. Similar family members in mice have roles in the regulation of metabolism and in the differentiation of the pancreas and liver.
Synonyms:	HNF3A; TCF3A
Protein Families:	ES Cell Differentiation/IPS, Transcription Factors

[View online »](#)

Product images:



HEK293T cells were transfected with the pCMV6-ENTRY control (Left lane) or pCMV6-ENTRY FOXA1 ([RC206045], Right lane) cDNA for 48 hrs and lysed. Equivalent amounts of cell lysates (5 ug per lane) were separated by SDS-PAGE and immunoblotted with anti-FOXA1. Positive lysates [LY401427] (100ug) and [LC401427] (20ug) can be purchased separately from OriGene.



Western blot analysis of extracts (35ug) from 9 different cell lines by using anti-FOXA1 monoclonal antibody.