

Product datasheet for TA502507

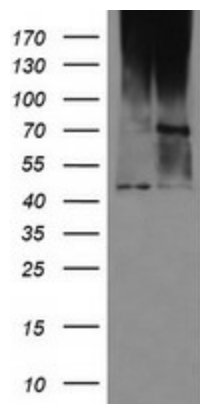
MAB21L3 Mouse Monoclonal Antibody [Clone ID: OTI2A3]

Product data:

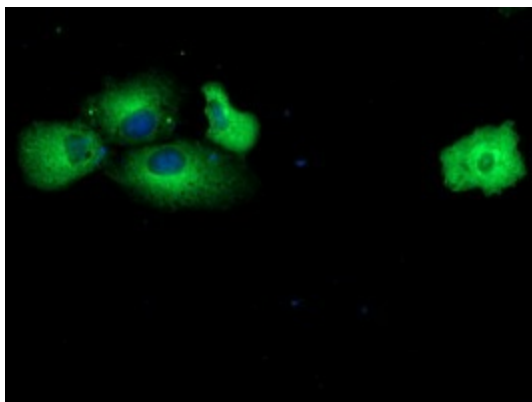
Product Type:	Primary Antibodies
Clone Name:	OTI2A3
Applications:	WB
Recommend Dilution:	WB 1:500, IF 1:100, FLOW 1:100
Reactivity:	Human
Host:	Mouse
Isotype:	IgG1
Clonality:	Monoclonal
Immunogen:	Full length human recombinant protein of human C1orf161 (NP_689580) produced in HEK293T cell.
Formulation:	PBS (PH 7.3) containing 1% BSA, 50% glycerol and 0.02% sodium azide.
Concentration:	0.78 mg/ml
Purification:	Purified from mouse ascites fluids or tissue culture supernatant by affinity chromatography (protein A/G)
Predicted Protein Size:	42.2 kDa
Gene Name:	mab-21 like 3
Database Link:	NP_689580 Entrez Gene 126868 Human
Synonyms:	C1orf161



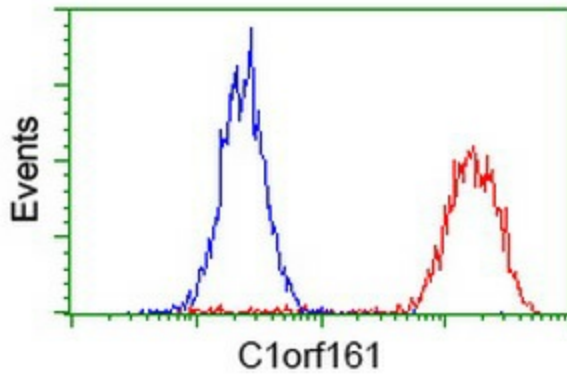
[View online »](#)

Product images:

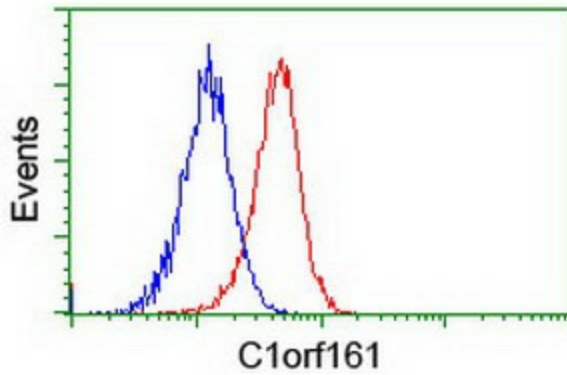
HEK293T cells were transfected with the pCMV6-ENTRY control (Left lane) or pCMV6-ENTRY C1orf161 ([RC217974], Right lane) cDNA for 48 hrs and lysed. Equivalent amounts of cell lysates (5 ug per lane) were separated by SDS-PAGE and immunoblotted with anti-C1orf161. Positive lysates [LY407616] (100ug) and [LC407616] (20ug) can be purchased separately from OriGene.



Anti-C1orf161 mouse monoclonal antibody (TA502507) immunofluorescent staining of COS7 cells transiently transfected by pCMV6-ENTRY C1orf161 ([RC217974]).



Flow cytometric Analysis of HeLa cells, using anti-C1orf161 antibody (TA502507), (Red), compared to a nonspecific negative control antibody, (Blue).



Flow cytometric Analysis of Jurkat cells, using anti-C1orf161 antibody (TA502507), (Red), compared to a nonspecific negative control antibody, (Blue).