

Product datasheet for **TA502717**

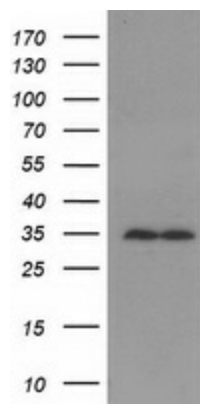
RACK1 Mouse Monoclonal Antibody [Clone ID: OTI2D8]

Product data:

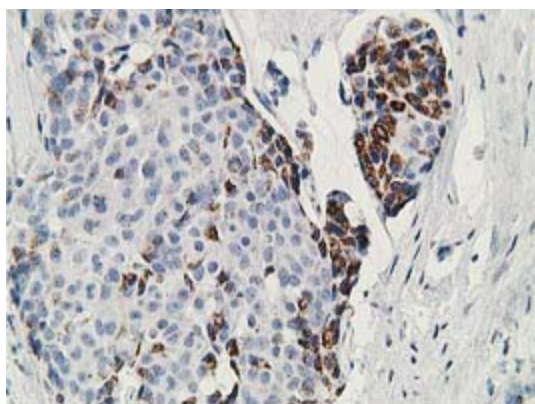
Product Type:	Primary Antibodies
Clone Name:	OTI2D8
Applications:	FC, IHC, WB
Recommend Dilution:	WB 1:500, IHC 1:150, FLOW 1:100
Reactivity:	Human
Host:	Mouse
Isotype:	IgG1
Clonality:	Monoclonal
Immunogen:	Full length human recombinant protein of human GNB2L1 (NP_006089) produced in HEK293T cell.
Formulation:	PBS (PH 7.3) containing 1% BSA, 50% glycerol and 0.02% sodium azide.
Concentration:	0.39 mg/ml
Purification:	Purified from mouse ascites fluids or tissue culture supernatant by affinity chromatography (protein A/G)
Predicted Protein Size:	34.9 kDa
Gene Name:	receptor for activated C kinase 1
Database Link:	NP_006089 Entrez Gene 10399 Human
Synonyms:	Gnb2-rs1; GNB2L1; H12.3; HLC-7; PIG21
Protein Families:	Druggable Genome



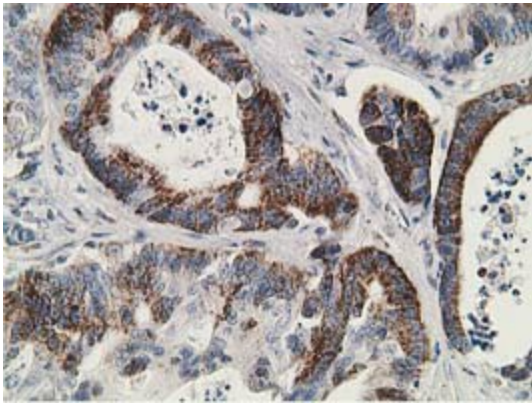
[View online »](#)

Product images:

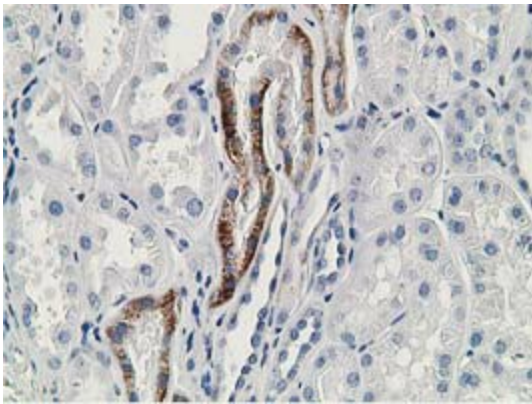
HEK293T cells were transfected with the pCMV6-ENTRY control (Left lane) or pCMV6-ENTRY GNB2L1 ([RC205092], Right lane) cDNA for 48 hrs and lysed. Equivalent amounts of cell lysates (5 ug per lane) were separated by SDS-PAGE and immunoblotted with anti-GNB2L1. Positive lysates [LY401838] (100ug) and [LC401838] (20ug) can be purchased separately from OriGene.



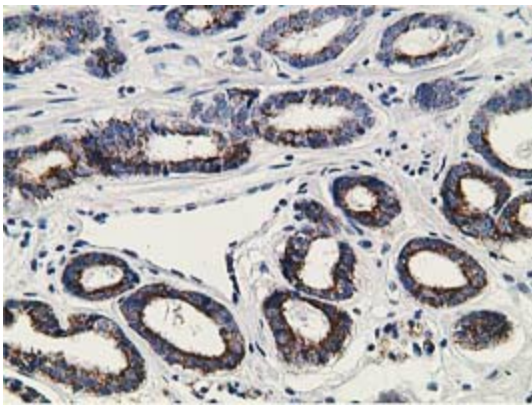
Immunohistochemical staining of paraffin-embedded Adenocarcinoma of Human breast tissue using anti-GNB2L1 mouse monoclonal antibody. (Heat-induced epitope retrieval by 10mM citric buffer, pH6.0, 100°C for 10min, TA502717)



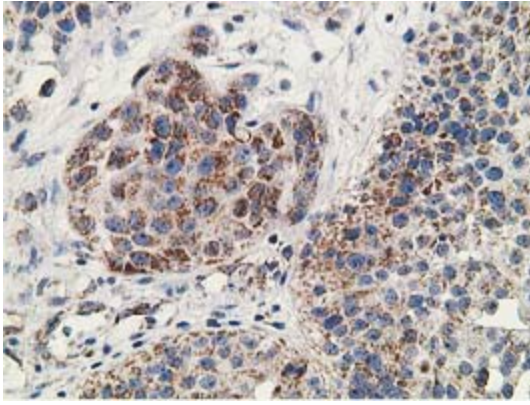
Immunohistochemical staining of paraffin-embedded Adenocarcinoma of Human colon tissue using anti-GNB2L1 mouse monoclonal antibody. (Heat-induced epitope retrieval by 10mM citric buffer, pH6.0, 100°C for 10min, TA502717)



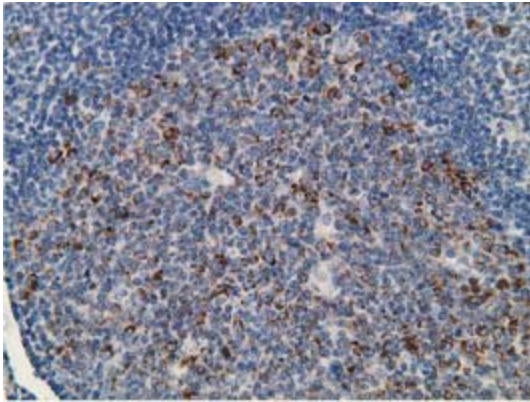
Immunohistochemical staining of paraffin-embedded Human Kidney tissue within the normal limits using anti-GNB2L1 mouse monoclonal antibody. (Heat-induced epitope retrieval by 10mM citric buffer, pH6.0, 100°C for 10min, TA502717)



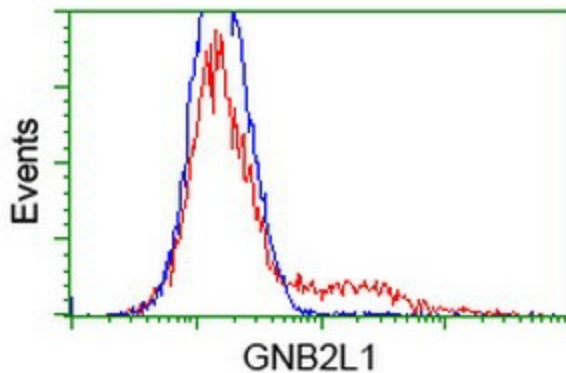
Immunohistochemical staining of paraffin-embedded Carcinoma of Human prostate tissue using anti-GNB2L1 mouse monoclonal antibody. (Heat-induced epitope retrieval by 10mM citric buffer, pH6.0, 100°C for 10min, TA502717)



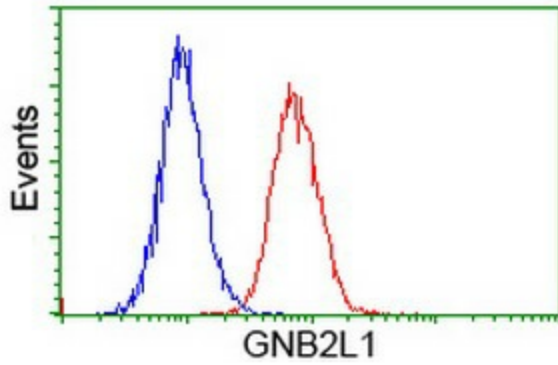
Immunohistochemical staining of paraffin-embedded Carcinoma of Human bladder tissue using anti-GNB2L1 mouse monoclonal antibody. (Heat-induced epitope retrieval by 10mM citric buffer, pH6.0, 100°C for 10min, TA502717)



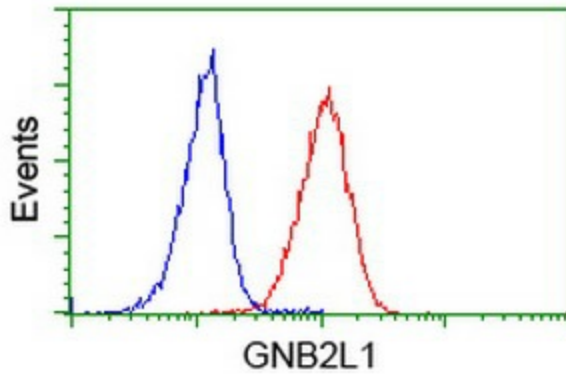
Immunohistochemical staining of paraffin-embedded Human lymph node tissue within the normal limits using anti-GNB2L1 mouse monoclonal antibody. (Heat-induced epitope retrieval by 10mM citric buffer, pH6.0, 100°C for 10min, TA502717)



HEK293T cells transfected with either [RC205092] overexpress plasmid (Red) or empty vector control plasmid (Blue) were immunostained by anti-GNB2L1 antibody (TA502717), and then analyzed by flow cytometry.



Flow cytometric Analysis of HeLa cells, using anti-GNB2L1 antibody (TA502717), (Red), compared to a nonspecific negative control antibody, (Blue).



Flow cytometric Analysis of Jurkat cells, using anti-GNB2L1 antibody (TA502717), (Red), compared to a nonspecific negative control antibody, (Blue).