

## Product datasheet for TA503139

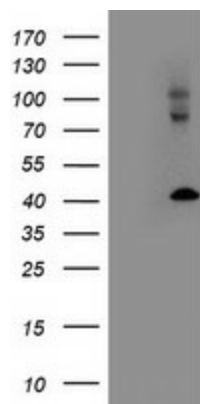
### LMCD1 Mouse Monoclonal Antibody [Clone ID: OT11H5]

#### Product data:

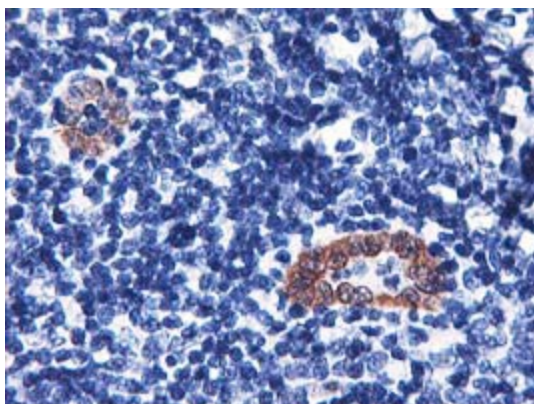
Product Type:	Primary Antibodies
Clone Name:	OT11H5
Applications:	FC, IF, IHC, WB
Recommend Dilution:	WB 1:2000, IHC 1:150, IF 1:100, FLOW 1:100
Reactivity:	Human
Host:	Mouse
Isotype:	IgG1
Clonality:	Monoclonal
Immunogen:	Full length human recombinant protein of human LMCD1(NP_055398) produced in HEK293T cell.
Formulation:	PBS (PH 7.3) containing 1% BSA, 50% glycerol and 0.02% sodium azide.
Concentration:	0.8 mg/ml
Purification:	Purified from mouse ascites fluids or tissue culture supernatant by affinity chromatography (protein A/G)
Predicted Protein Size:	40.7 kDa
Gene Name:	LIM and cysteine rich domains 1
Database Link:	<a href="#">NP_055398 Entrez Gene 29995 Human</a>
Background:	The protein encoded by this gene contains a cysteine-rich domain in the N-terminal region and 2 LIM domains in the C-terminal region. It also has several potential phosphorylation and N-myristoylation sites and a single potential N-glycosylation site. The presence of LIM domains implies involvement in protein-protein interactions. Expression of this gene has been detected in most tissues, with highest expression in skeletal muscle. Transcript variants utilizing alternative polyA signals have been observed. [provided by RefSeq, Jul 2008]. COMPLETENESS: complete on the 3' end.
Synonyms:	dyxin; LIM and cysteine-rich domains 1



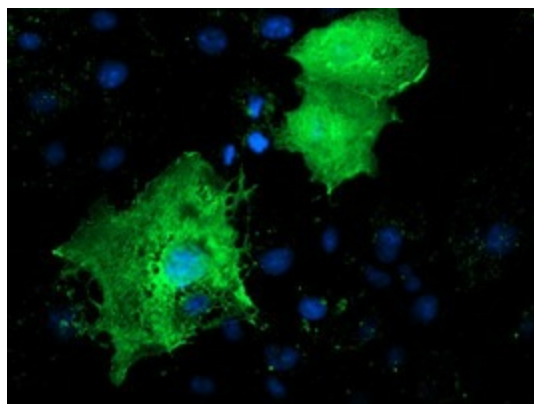
[View online »](#)

**Product images:**

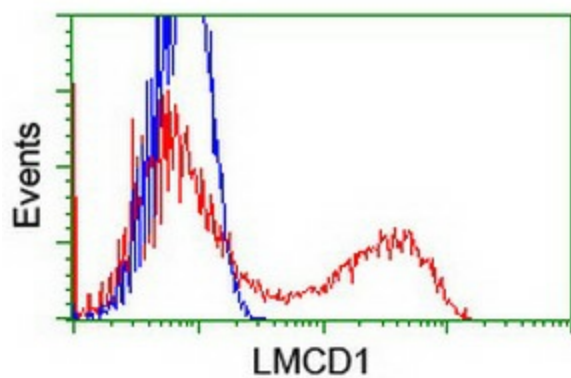
HEK293T cells were transfected with the pCMV6-ENTRY control (Left lane) or pCMV6-ENTRY LMCD1 ([RC200062], Right lane) cDNA for 48 hrs and lysed. Equivalent amounts of cell lysates (5 ug per lane) were separated by SDS-PAGE and immunoblotted with anti-LMCD1. Positive lysates [LY402349] (100ug) and [LC402349] (20ug) can be purchased separately from OriGene.



Immunohistochemical staining of paraffin-embedded Human lymphoma tissue using anti-LMCD1 mouse monoclonal antibody. (Heat-induced epitope retrieval by 10mM citric buffer, pH6.0, 100°C for 10min, TA503139)



Anti-LMCD1 mouse monoclonal antibody (TA503139) immunofluorescent staining of COS7 cells transiently transfected by pCMV6-ENTRY LMCD1 ([RC200062]).



HEK293T cells transfected with either [RC200062] overexpress plasmid (Red) or empty vector control plasmid (Blue) were immunostained by anti-LMCD1 antibody (TA503139), and then analyzed by flow cytometry.