

Product datasheet for TA503337

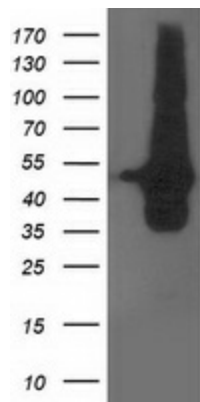
DOK2 Mouse Monoclonal Antibody [Clone ID: OTI3D6]

Product data:

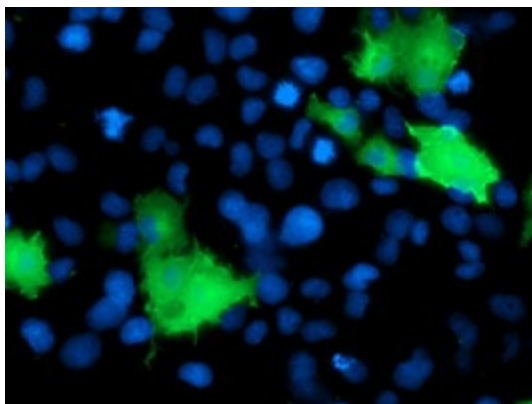
Product Type:	Primary Antibodies
Clone Name:	OTI3D6
Applications:	FC, IF, WB
Recommend Dilution:	WB 1:2000, IF 1:100, FLOW 1:100
Reactivity:	Human
Host:	Mouse
Isotype:	IgG1
Clonality:	Monoclonal
Immunogen:	Full length human recombinant protein of human DOK2(NP_003965) produced in HEK293T cell.
Formulation:	PBS (PH 7.3) containing 1% BSA, 50% glycerol and 0.02% sodium azide.
Concentration:	1 mg/ml
Purification:	Purified from mouse ascites fluids or tissue culture supernatant by affinity chromatography (protein A/G)
Predicted Protein Size:	45.2 kDa
Gene Name:	docking protein 2
Database Link:	NP_003965 Entrez Gene 9046 Human
Background:	The protein encoded by this gene is constitutively tyrosine phosphorylated in hematopoietic progenitors isolated from chronic myelogenous leukemia (CML) patients in the chronic phase. It may be a critical substrate for p210(bcr/abl), a chimeric protein whose presence is associated with CML. This encoded protein binds p120 (RasGAP) from CML cells. [provided by RefSeq]
Synonyms:	p56DOK; p56dok-2
Protein Families:	Druggable Genome

[View online »](#)

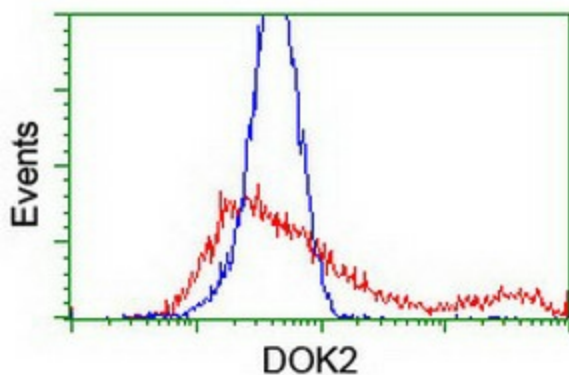
Product images:



HEK293T cells were transfected with the pCMV6-ENTRY control (Left lane) or pCMV6-ENTRY DOK2 ([RC207621], Right lane) cDNA for 48 hrs and lysed. Equivalent amounts of cell lysates (5 ug per lane) were separated by SDS-PAGE and immunoblotted with anti-DOK2. Positive lysates [LY418321] (100ug) and [LC418321] (20ug) can be purchased separately from OriGene.



Anti-DOK2 mouse monoclonal antibody (TA503337) immunofluorescent staining of COS7 cells transiently transfected by pCMV6-ENTRY DOK2 ([RC207621]).



HEK293T cells transfected with either [RC207621] overexpress plasmid (Red) or empty vector control plasmid (Blue) were immunostained by anti-DOK2 antibody (TA503337), and then analyzed by flow cytometry.