

Product datasheet for **TA504434**

PEDF (SERPINF1) Mouse Monoclonal Antibody [Clone ID: OTI1F7]

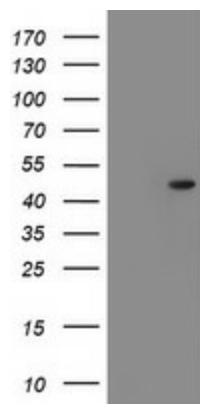
Product data:

Product Type:	Primary Antibodies
Clone Name:	OTI1F7
Applications:	WB
Recommend Dilution:	WB 1:1000
Reactivity:	Human
Host:	Mouse
Isotype:	IgG2a
Clonality:	Monoclonal
Immunogen:	Full length human recombinant protein of human SERPINF1(NP_002606) produced in HEK293T cell.
Formulation:	PBS (PH 7.3) containing 1% BSA, 50% glycerol and 0.02% sodium azide.
Concentration:	1.08 mg/ml
Purification:	Purified from mouse ascites fluids or tissue culture supernatant by affinity chromatography (protein A/G)
Predicted Protein Size:	46.1 kDa
Gene Name:	serpin family F member 1
Database Link:	NP_002606 Entrez Gene 5176 Human
Background:	The protein encoded by this gene is a member of the serpin family, although it does not display the serine protease inhibitory activity shown by many of the other serpin family members. The encoded protein is secreted and strongly inhibits angiogenesis. In addition, this protein is a neurotrophic factor involved in neuronal differentiation in retinoblastoma cells.
Synonyms:	EPC-1; OI6; OI12; PEDF; PIG35
Protein Families:	Druggable Genome, Secreted Protein



[View online »](#)

Product images:



HEK293T cells were transfected with the pCMV6-ENTRY control (Left lane) or pCMV6-ENTRY SERPINF1 ([RC204186], Right lane) cDNA for 48 hrs and lysed. Equivalent amounts of cell lysates (5 ug per lane) were separated by SDS-PAGE and immunoblotted with anti-SERPINF1. Positive lysates [LY400927] (100ug) and [LC400927] (20ug) can be purchased separately from OriGene.