

## Product datasheet for **TA505599**

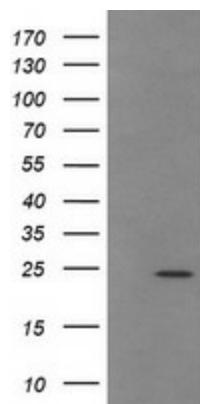
### TRAPPC4 Mouse Monoclonal Antibody [Clone ID: OTI2G8]

#### Product data:

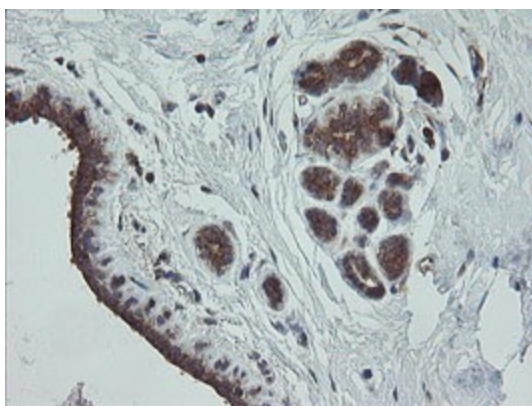
Product Type:	Primary Antibodies
Clone Name:	OTI2G8
Applications:	FC, IHC, WB
Recommend Dilution:	WB 1:1000, IHC 1:150, FLOW 1:100
Reactivity:	Human
Host:	Mouse
Isotype:	IgG2a
Clonality:	Monoclonal
Immunogen:	Full length human recombinant protein of human TRAPPC4(NP_057230) produced in HEK293T cell.
Formulation:	PBS (PH 7.3) containing 1% BSA, 50% glycerol and 0.02% sodium azide.
Concentration:	1 mg/ml
Purification:	Purified from mouse ascites fluids or tissue culture supernatant by affinity chromatography (protein A/G)
Predicted Protein Size:	24.2 kDa
Gene Name:	trafficking protein particle complex 4
Database Link:	<a href="#">NP_057230</a> <a href="#">Entrez Gene 51399 Human</a>
Synonyms:	CGI-104; HSPC172; PTD009; SBDN; SYNBINDIN; TRS23
Protein Families:	Druggable Genome



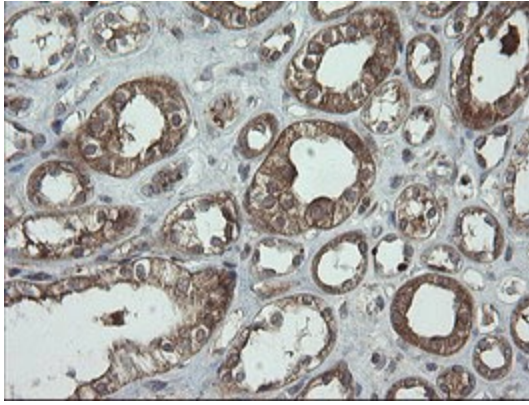
[View online »](#)

**Product images:**

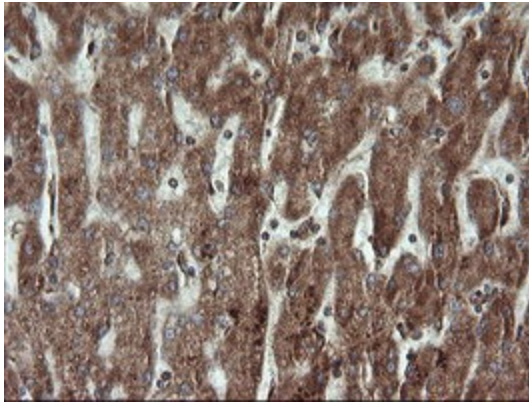
HEK293T cells were transfected with the pCMV6-ENTRY control (Left lane) or pCMV6-ENTRY TRAPPC4 ([RC202213], Right lane) cDNA for 48 hrs and lysed. Equivalent amounts of cell lysates (5 ug per lane) were separated by SDS-PAGE and immunoblotted with anti-TRAPPC4. Positive lysates [LY414159] (100ug) and [LC414159] (20ug) can be purchased separately from OriGene.



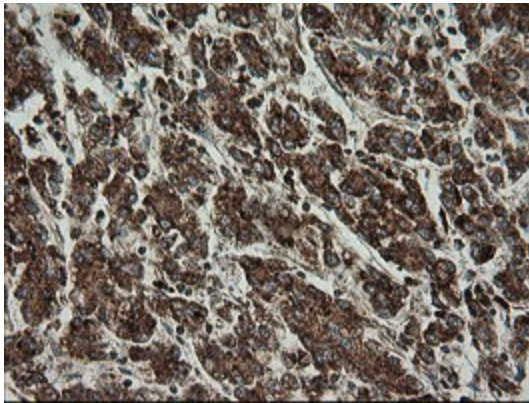
Immunohistochemical staining of paraffin-embedded Human breast tissue within the normal limits using anti-TRAPPC4 mouse monoclonal antibody. (Heat-induced epitope retrieval by 10mM citric buffer, pH6.0, 120°C for 3min, TA505599)



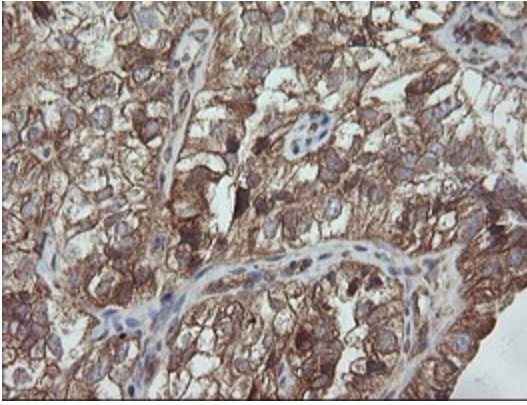
Immunohistochemical staining of paraffin-embedded Human Kidney tissue within the normal limits using anti-TRAPPC4 mouse monoclonal antibody. (Heat-induced epitope retrieval by 10mM citric buffer, pH6.0, 120°C for 3min, TA505599)



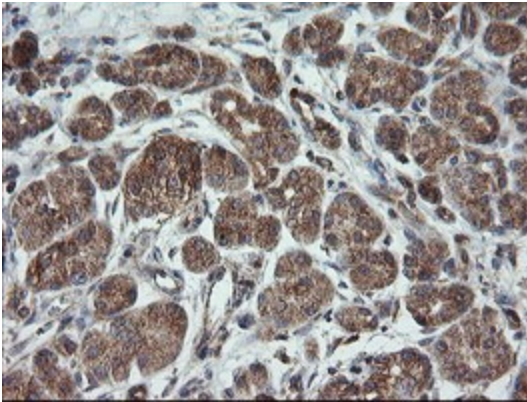
Immunohistochemical staining of paraffin-embedded Human liver tissue within the normal limits using anti-TRAPPC4 mouse monoclonal antibody. (Heat-induced epitope retrieval by 10mM citric buffer, pH6.0, 120°C for 3min, TA505599)



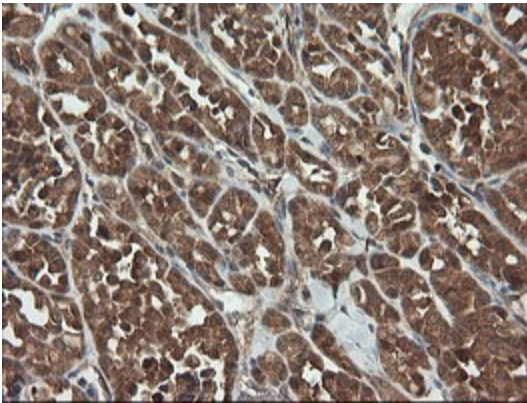
Immunohistochemical staining of paraffin-embedded Carcinoma of Human liver tissue using anti-TRAPPC4 mouse monoclonal antibody. (Heat-induced epitope retrieval by 10mM citric buffer, pH6.0, 120°C for 3min, TA505599)



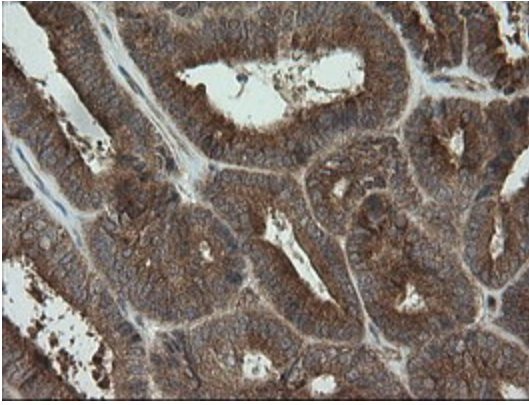
Immunohistochemical staining of paraffin-embedded Adenocarcinoma of Human ovary tissue using anti-TRAPPC4 mouse monoclonal antibody. (Heat-induced epitope retrieval by 10mM citric buffer, pH6.0, 120°C for 3min, TA505599)



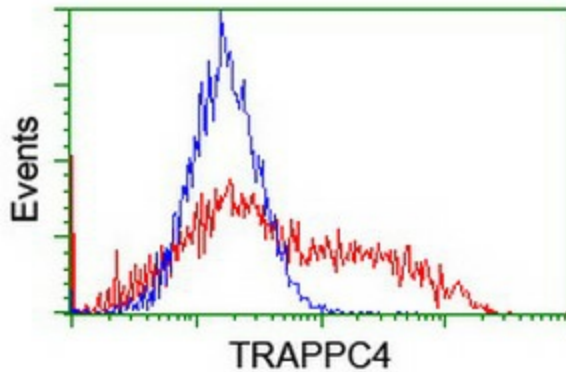
Immunohistochemical staining of paraffin-embedded Human pancreas tissue within the normal limits using anti-TRAPPC4 mouse monoclonal antibody. (Heat-induced epitope retrieval by 10mM citric buffer, pH6.0, 120°C for 3min, TA505599)



Immunohistochemical staining of paraffin-embedded Carcinoma of Human thyroid tissue using anti-TRAPPC4 mouse monoclonal antibody. (Heat-induced epitope retrieval by 10mM citric buffer, pH6.0, 120°C for 3min, TA505599)



Immunohistochemical staining of paraffin-embedded Adenocarcinoma of Human endometrium tissue using anti-TRAPPC4 mouse monoclonal antibody. (Heat-induced epitope retrieval by 10mM citric buffer, pH6.0, 120°C for 3min, TA505599)



HEK293T cells transfected with either [RC202213] overexpress plasmid (Red) or empty vector control plasmid (Blue) were immunostained by anti-TRAPPC4 antibody (TA505599), and then analyzed by flow cytometry.