

Product datasheet for TA505624

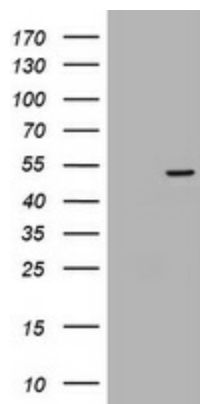
Tapasin Related Protein (TAPBPL) Mouse Monoclonal Antibody [Clone ID: OTI1D3]

Product data:

| | |
|-------------------------|---|
| Product Type: | Primary Antibodies |
| Clone Name: | OTI1D3 |
| Applications: | WB |
| Recommend Dilution: | WB 1:2000 |
| Reactivity: | Human |
| Host: | Mouse |
| Isotype: | IgG2b |
| Clonality: | Monoclonal |
| Immunogen: | Full length human recombinant protein of human TAPBPL(NP_060479) produced in HEK293T cell. |
| Formulation: | PBS (PH 7.3) containing 1% BSA, 50% glycerol and 0.02% sodium azide. |
| Concentration: | 1 mg/ml |
| Purification: | Purified from mouse ascites fluids or tissue culture supernatant by affinity chromatography (protein A/G) |
| Predicted Protein Size: | 50 kDa |
| Gene Name: | TAP binding protein like |
| Database Link: | NP_060479 Entrez Gene 55080 Human |
| Background: | Tapasin, or TAPBP (MIM 601962), is a member of the variable-constant Ig superfamily that links major histocompatibility complex (MHC) class I molecules to the transporter associated with antigen processing (TAP; see MIM 170260) in the endoplasmic reticulum (ER). The TAPBP gene is located near the MHC complex on chromosome 6p21.3. TAPBPL is a member of the Ig superfamily that is localized on chromosome 12p13.3, a region somewhat paralogous to the MHC. [supplied by OMIM, Mar 2008] |
| Synonyms: | TAPBP-R; TAPBPR |
| Protein Families: | Druggable Genome, Transmembrane |



[View online »](#)

Product images:

HEK293T cells were transfected with the pCMV6-ENTRY control (Left lane) or pCMV6-ENTRY TAPBPL ([RC201899], Right lane) cDNA for 48 hrs and lysed. Equivalent amounts of cell lysates (5 ug per lane) were separated by SDS-PAGE and immunoblotted with anti-TAPBPL. Positive lysates [LY413343] (100ug) and [LC413343] (20ug) can be purchased separately from OriGene.