

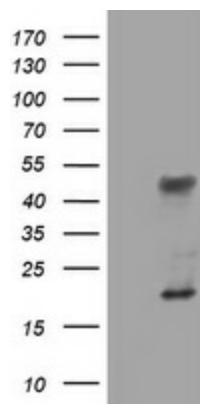
Product datasheet for **TA802234**

TET1 Mouse Monoclonal Antibody [Clone ID: OTI7E2]

Product data:

| | |
|---------------------|---|
| Product Type: | Primary Antibodies |
| Clone Name: | OTI7E2 |
| Applications: | WB |
| Recommend Dilution: | WB 1:2000 |
| Reactivity: | Human |
| Host: | Mouse |
| Isotype: | IgG1 |
| Clonality: | Monoclonal |
| Immunogen: | Human recombinant protein fragment corresponding to amino acids 1-305 of human TET1 (NP_085128) produced in E.coli. |
| Formulation: | PBS (PH 7.3) containing 1% BSA, 50% glycerol and 0.02% sodium azide. |
| Concentration: | 1 mg/ml |
| Purification: | Purified from mouse ascites fluids or tissue culture supernatant by affinity chromatography (protein A/G) |
| Gene Name: | tet methylcytosine dioxygenase 1 |
| Database Link: | NP_085128 Entrez Gene 80312 Human |
| Synonyms: | bA119F7.1; CXXC6; LCX |

[View online »](#)

Product images:

HEK293T cells were transfected with the pCMV6-ENTRY control (Left lane) or pCMV6-ENTRY TET1 ([RC218608], Right lane) cDNA for 48 hrs and lysed. Equivalent amounts of cell lysates (5 ug per lane) were separated by SDS-PAGE and immunoblotted with anti-TET1.