

Product datasheet for TA802340

NDUFS2 Mouse Monoclonal Antibody [Clone ID: OTI1D5]

Product data:

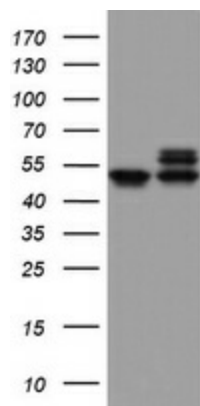
Product Type:	Primary Antibodies
Clone Name:	OTI1D5
Applications:	IHC, WB
Recommend Dilution:	WB 1:2000, IHC 1:150
Reactivity:	Human
Host:	Mouse
Isotype:	IgG1
Clonality:	Monoclonal
Immunogen:	Human recombinant protein fragment corresponding to amino acids 205-463 of human NDUFS2 (NP_004541) produced in E.coli.
Formulation:	PBS (PH 7.3) containing 1% BSA, 50% glycerol and 0.02% sodium azide.
Concentration:	1 mg/ml
Purification:	Purified from mouse ascites fluids or tissue culture supernatant by affinity chromatography (protein A/G)
Predicted Protein Size:	49.1 kDa
Gene Name:	NADH:ubiquinone oxidoreductase core subunit S2
Database Link:	NP_004541 Entrez Gene 4720 Human
Background:	The protein encoded by this gene is a core subunit of the mitochondrial membrane respiratory chain NADH dehydrogenase (complex I). Mammalian mitochondrial complex I is composed of at least 43 different subunits, 7 of which are encoded by the mitochondrial genome, and the rest are the products of nuclear genes. The iron-sulfur protein fraction of complex I is made up of 7 subunits, including this gene product. Complex I catalyzes the NADH oxidation with concomitant ubiquinone reduction and proton ejection out of the mitochondria. Mutations in this gene are associated with mitochondrial complex I deficiency. Alternatively spliced transcript variants encoding different isoforms have been found for this gene. [provided by RefSeq, Oct 2009]
Synonyms:	CI-49



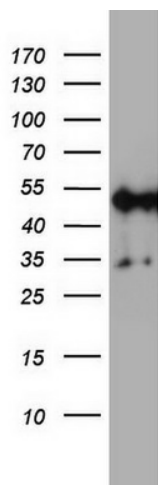
[View online »](#)

Protein Pathways: Alzheimer's disease, Huntington's disease, Metabolic pathways, Oxidative phosphorylation, Parkinson's disease

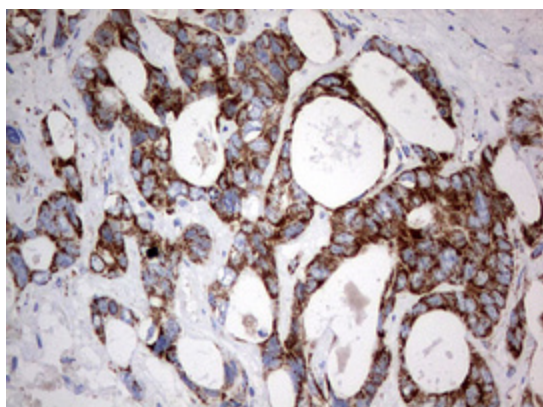
Product images:



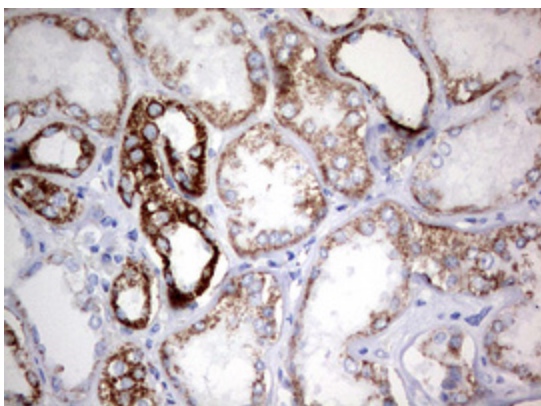
HEK293T cells were transfected with the pCMV6-ENTRY control (Left lane) or pCMV6-ENTRY NDUFS2 ([RC203485], Right lane) cDNA for 48 hrs and lysed. Equivalent amounts of cell lysates (5 ug per lane) were separated by SDS-PAGE and immunoblotted with anti-NDUFS2. Positive lysates [LY417919] (100ug) and [LC417919] (20ug) can be purchased separately from OriGene.



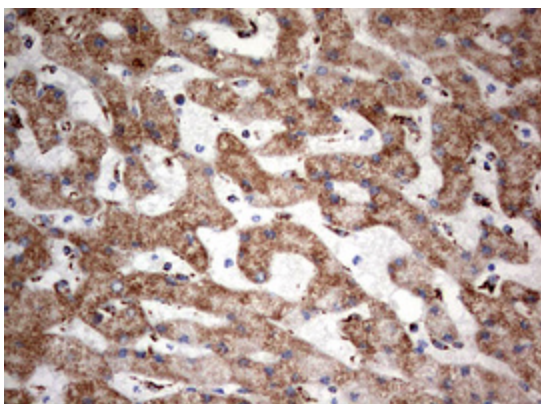
Western blot analysis of A549 cell lysate (35ug) by using anti-NDUFS2 monoclonal antibody. Dilution: 1:500



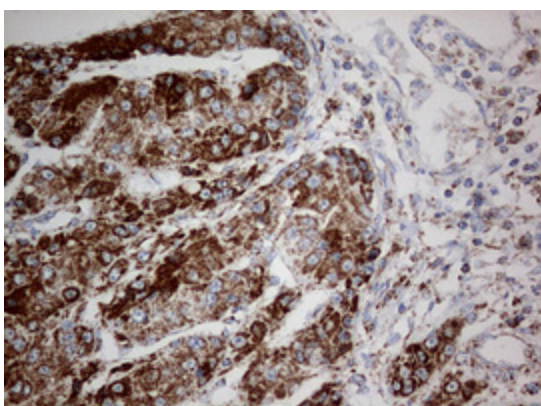
Immunohistochemical staining of paraffin-embedded Adenocarcinoma of Human colon tissue using anti-NDUFS2 mouse monoclonal antibody. (Heat-induced epitope retrieval by 10mM citric buffer, pH6.0, 120°C for 3min, TA802340)



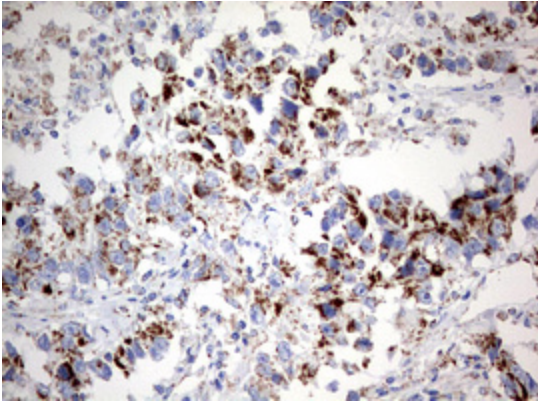
Immunohistochemical staining of paraffin-embedded Human Kidney tissue within the normal limits using anti-NDUFS2 mouse monoclonal antibody. (Heat-induced epitope retrieval by 10mM citric buffer, pH6.0, 120°C for 3min, TA802340)



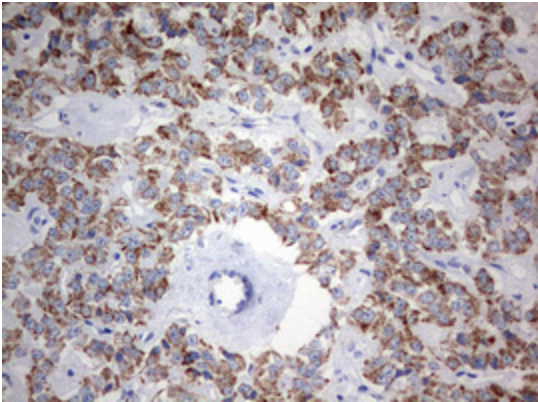
Immunohistochemical staining of paraffin-embedded Human liver tissue within the normal limits using anti-NDUFS2 mouse monoclonal antibody. (Heat-induced epitope retrieval by 10mM citric buffer, pH6.0, 120°C for 3min, TA802340)



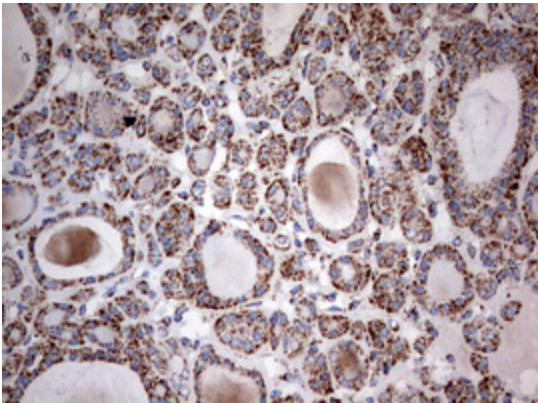
Immunohistochemical staining of paraffin-embedded Carcinoma of Human liver tissue using anti-NDUFS2 mouse monoclonal antibody. (Heat-induced epitope retrieval by 10mM citric buffer, pH6.0, 120°C for 3min, TA802340)



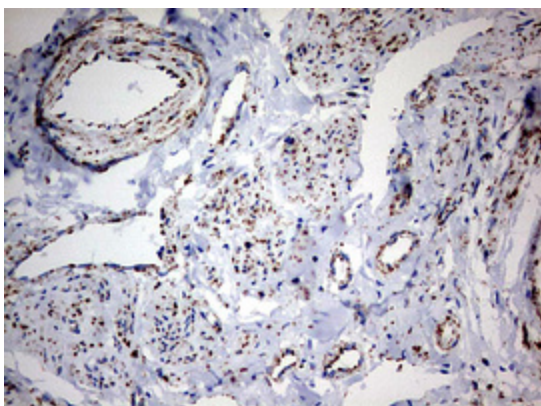
Immunohistochemical staining of paraffin-embedded Adenocarcinoma of Human ovary tissue using anti-NDUFS2 mouse monoclonal antibody. (Heat-induced epitope retrieval by 10mM citric buffer, pH6.0, 120°C for 3min, TA802340)



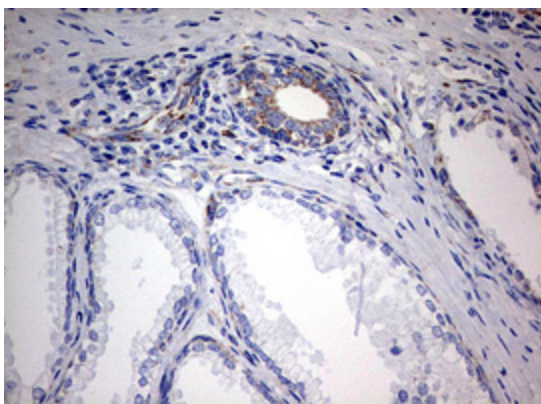
Immunohistochemical staining of paraffin-embedded Carcinoma of Human pancreas tissue using anti-NDUFS2 mouse monoclonal antibody. (Heat-induced epitope retrieval by 10mM citric buffer, pH6.0, 120°C for 3min, TA802340)



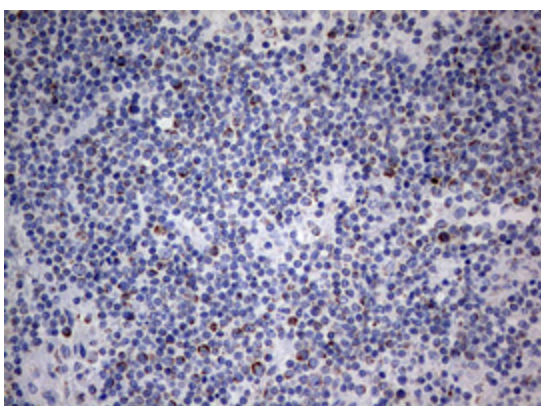
Immunohistochemical staining of paraffin-embedded Carcinoma of Human thyroid tissue using anti-NDUFS2 mouse monoclonal antibody. (Heat-induced epitope retrieval by 10mM citric buffer, pH6.0, 120°C for 3min, TA802340)



Immunohistochemical staining of paraffin-embedded Human endometrium tissue within the normal limits using anti-NDUFS2 mouse monoclonal antibody. (Heat-induced epitope retrieval by 10mM citric buffer, pH6.0, 120°C for 3min, TA802340)



Immunohistochemical staining of paraffin-embedded Human prostate tissue within the normal limits using anti-NDUFS2 mouse monoclonal antibody. (Heat-induced epitope retrieval by 10mM citric buffer, pH6.0, 120°C for 3min, TA802340)



Immunohistochemical staining of paraffin-embedded Human lymph node tissue within the normal limits using anti-NDUFS2 mouse monoclonal antibody. (Heat-induced epitope retrieval by 10mM citric buffer, pH6.0, 120°C for 3min, TA802340)