

Product datasheet for TA804670

Angiotensinogen (AGT) Mouse Monoclonal Antibody [Clone ID: OTI10D2]

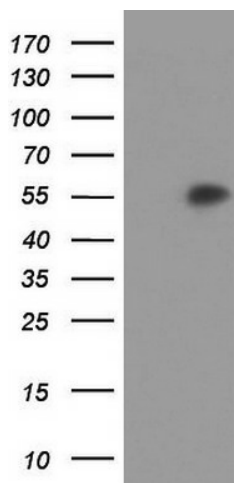
Product data:

Product Type:	Primary Antibodies
Clone Name:	OTI10D2
Applications:	WB
Recommend Dilution:	WB 1:500
Reactivity:	Human
Host:	Mouse
Isotype:	IgG1
Clonality:	Monoclonal
Immunogen:	Human recombinant protein fragment corresponding to amino acids 34-331 of human AGT (NP_000020) produced in E.coli.
Formulation:	PBS (PH 7.3) containing 1% BSA, 50% glycerol and 0.02% sodium azide.
Concentration:	1 mg/ml
Purification:	Purified from mouse ascites fluids or tissue culture supernatant by affinity chromatography (protein A/G)
Predicted Protein Size:	49.7 kDa
Gene Name:	angiotensinogen
Database Link:	NP_000020 Entrez Gene 183 Human
Background:	The protein encoded by this gene, pre-angiotensinogen or angiotensinogen precursor, is expressed in the liver and is cleaved by the enzyme renin in response to lowered blood pressure. The resulting product, angiotensin I, is then cleaved by angiotensin converting enzyme (ACE) to generate the physiologically active enzyme angiotensin II. The protein is involved in maintaining blood pressure and in the pathogenesis of essential hypertension and preeclampsia. Mutations in this gene are associated with susceptibility to essential hypertension, and can cause renal tubular dysgenesis, a severe disorder of renal tubular development. Defects in this gene have also been associated with non-familial structural atrial fibrillation, and inflammatory bowel disease. [provided by RefSeq, Jul 2008]
Synonyms:	ANHU; SERPINA8
Protein Families:	Druggable Genome, Secreted Protein

[View online »](#)

Protein Pathways: Renin-angiotensin system

Product images:



HEK293T cells were transfected with the pCMV6-ENTRY control (Left lane) or pCMV6-ENTRY AGT ([RC203768], Right lane) cDNA for 48 hrs and lysed. Equivalent amounts of cell lysates (5 ug per lane) were separated by SDS-PAGE and immunoblotted with anti-AGT. Positive lysates [LY400005] (100ug) and [LC400005] (20ug) can be purchased separately from OriGene.