

## Product datasheet for TA804806

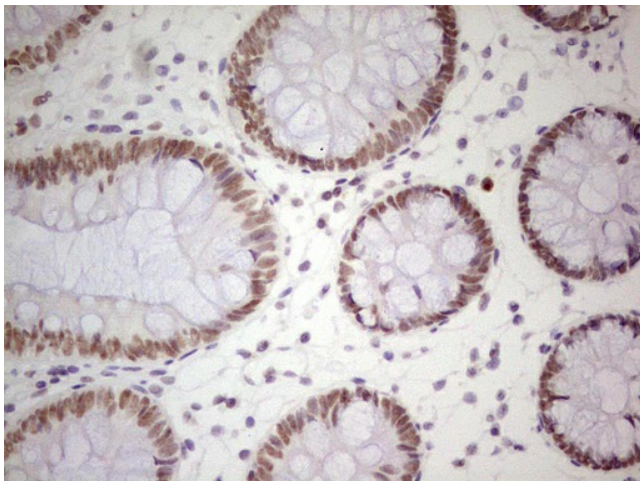
### NIPP1 (PPP1R8) Mouse Monoclonal Antibody [Clone ID: OTI2E12]

#### Product data:

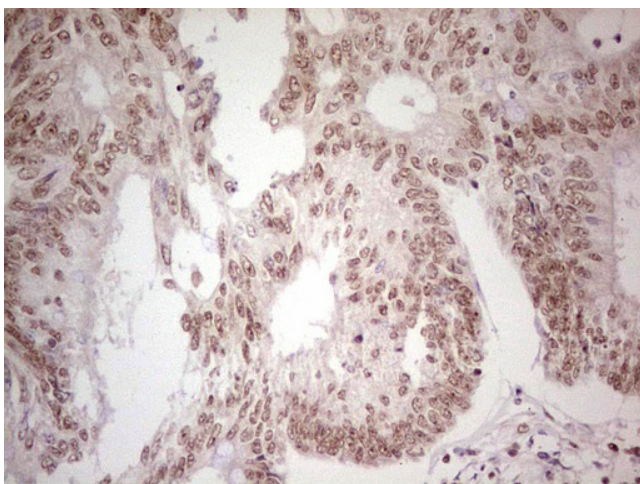
Product Type:	Primary Antibodies
Clone Name:	OTI2E12
Applications:	IHC
Recommend Dilution:	IHC 1:150
Reactivity:	Human
Host:	Mouse
Isotype:	IgG1
Clonality:	Monoclonal
Immunogen:	Human recombinant protein fragment corresponding to amino acids 1-225 of human PPP1R8 (NP_612568) produced in E.coli.
Formulation:	PBS (PH 7.3) containing 1% BSA, 50% glycerol and 0.02% sodium azide.
Concentration:	1 mg/ml
Purification:	Purified from mouse ascites fluids or tissue culture supernatant by affinity chromatography (protein A/G)
Gene Name:	protein phosphatase 1 regulatory subunit 8
Database Link:	<a href="#">NP_612568</a> <a href="#">Entrez Gene 5511</a> <a href="#">Human</a>
Synonyms:	ARD-1; ARD1; NIPP-1; NIPP1; PRO2047
Protein Families:	Druggable Genome, Transcription Factors



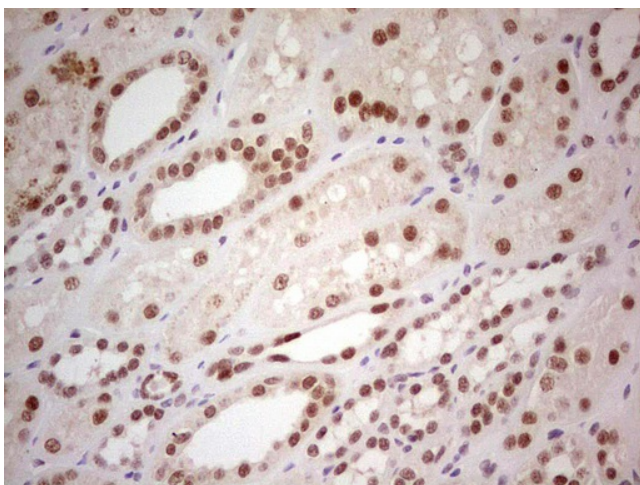
[View online »](#)

**Product images:**

Immunohistochemical staining of paraffin-embedded Human colon tissue within the normal limits using anti-PPP1R8 mouse monoclonal antibody. (Heat-induced epitope retrieval by 1 mM EDTA in 10mM Tris, pH8.5, 120°C for 3min, TA804806)



Immunohistochemical staining of paraffin-embedded Adenocarcinoma of Human colon tissue using anti-PPP1R8 mouse monoclonal antibody. (Heat-induced epitope retrieval by 1 mM EDTA in 10mM Tris, pH8.5, 120°C for 3min, TA804806)



Immunohistochemical staining of paraffin-embedded Human Kidney tissue within the normal limits using anti-PPP1R8 mouse monoclonal antibody. (Heat-induced epitope retrieval by 1 mM EDTA in 10mM Tris, pH8.5, 120°C for 3min, TA804806)