

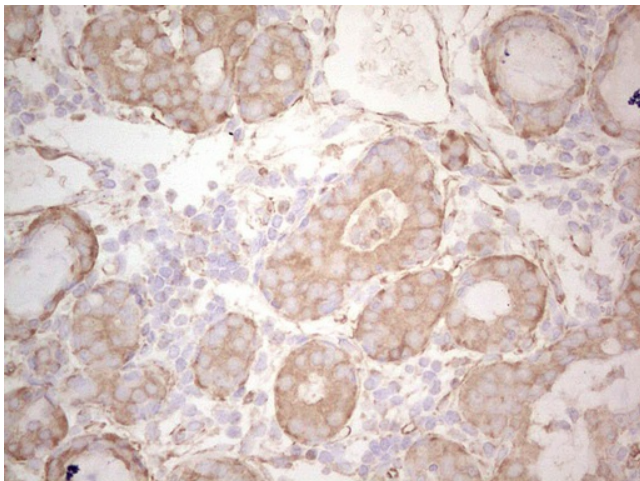
Product datasheet for TA806050

Ephrin A3 (EFNA3) Mouse Monoclonal Antibody [Clone ID: OTI4A4]

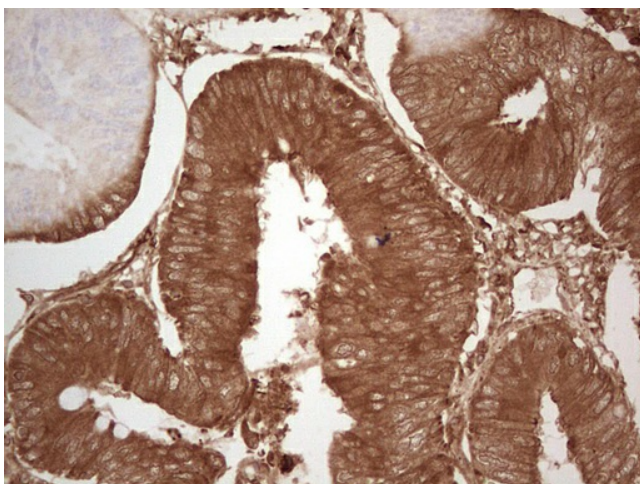
Product data:

Product Type:	Primary Antibodies
Clone Name:	OTI4A4
Applications:	IHC
Recommend Dilution:	IHC 1:150
Reactivity:	Human
Host:	Mouse
Isotype:	IgG2b
Clonality:	Monoclonal
Immunogen:	Human recombinant protein fragment corresponding to amino acids 23-214 of human EFNA3(NP_004943) produced in E.coli.
Formulation:	PBS (PH 7.3) containing 1% BSA, 50% glycerol and 0.02% sodium azide.
Concentration:	1 mg/ml
Purification:	Purified from mouse ascites fluids or tissue culture supernatant by affinity chromatography (protein A/G)
Predicted Protein Size:	26.2 kDa
Gene Name:	ephrin A3
Database Link:	NP_004943 Entrez Gene 1944 Human
Background:	This gene encodes a member of the ephrin (EPH) family. The ephrins and EPH-related receptors comprise the largest subfamily of receptor protein-tyrosine kinases and have been implicated in mediating developmental events, especially in the nervous system and in erythropoiesis. Based on their structures and sequence relationships, ephrins are divided into the ephrin-A (EFNA) class, which are anchored to the membrane by a glycosylphosphatidylinositol linkage, and the ephrin-B (EFNB) class, which are transmembrane proteins. This gene encodes an EFNA class ephrin. [provided by RefSeq, Jul 2008]
Synonyms:	EFL2; Ehk1-L; EPLG3; LERK3
Protein Families:	Druggable Genome
Protein Pathways:	Axon guidance

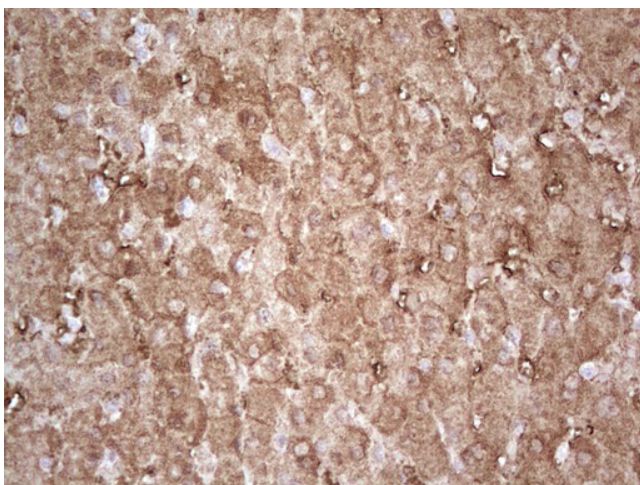

[View online »](#)

Product images:

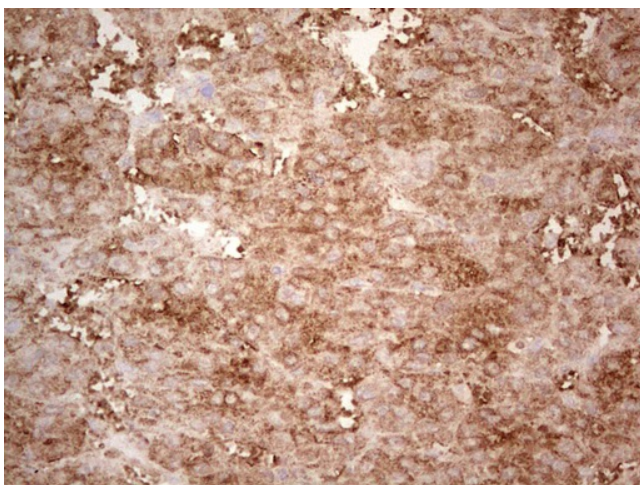
Immunohistochemical staining of paraffin-embedded Adenocarcinoma of Human breast tissue using anti-EFNA3 mouse monoclonal antibody. (Heat-induced epitope retrieval by 1 mM EDTA in 10mM Tris, pH8.5, 120°C for 3min, TA806050)



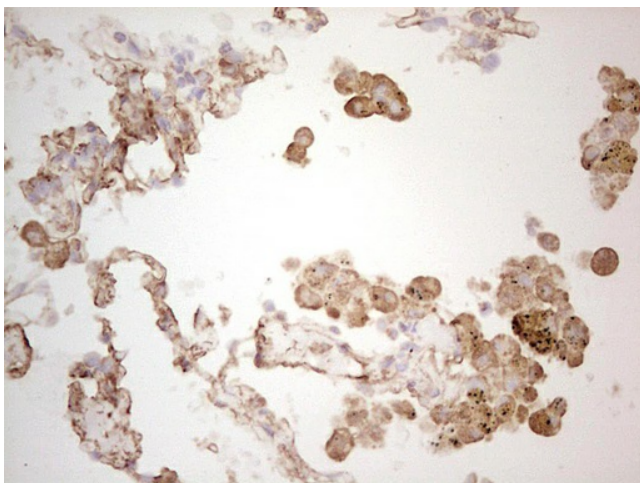
Immunohistochemical staining of paraffin-embedded Adenocarcinoma of Human colon tissue using anti-EFNA3 mouse monoclonal antibody. (Heat-induced epitope retrieval by 1 mM EDTA in 10mM Tris, pH8.5, 120°C for 3min, TA806050)



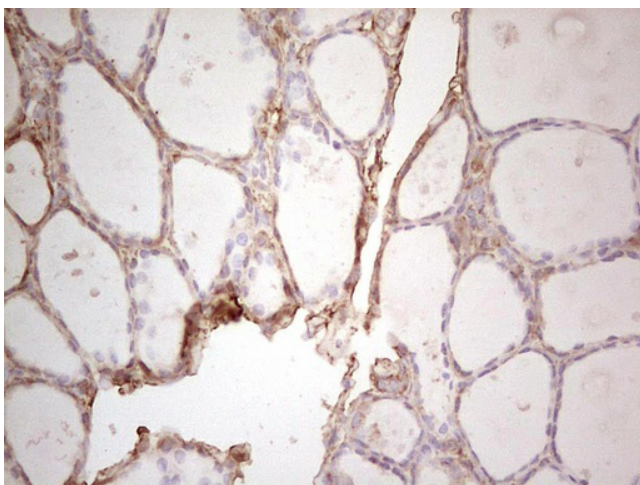
Immunohistochemical staining of paraffin-embedded Human liver tissue within the normal limits using anti-EFNA3 mouse monoclonal antibody. (Heat-induced epitope retrieval by 1 mM EDTA in 10mM Tris, pH8.5, 120°C for 3min, TA806050)



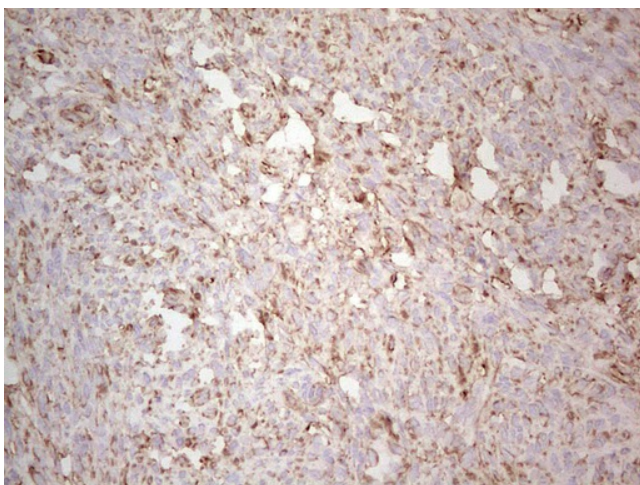
Immunohistochemical staining of paraffin-embedded Carcinoma of Human liver tissue using anti-EFNA3 mouse monoclonal antibody. (Heat-induced epitope retrieval by 1 mM EDTA in 10mM Tris, pH8.5, 120°C for 3min, TA806050)



Immunohistochemical staining of paraffin-embedded Human lung tissue within the normal limits using anti-EFNA3 mouse monoclonal antibody. (Heat-induced epitope retrieval by 1 mM EDTA in 10mM Tris, pH8.5, 120°C for 3min, TA806050)



Immunohistochemical staining of paraffin-embedded Human thyroid tissue within the normal limits using anti-EFNA3 mouse monoclonal antibody. (Heat-induced epitope retrieval by 1 mM EDTA in 10mM Tris, pH8.5, 120°C for 3min, TA806050)



Immunohistochemical staining of paraffin-embedded Human endometrium tissue within the normal limits using anti-EFNA3 mouse monoclonal antibody. (Heat-induced epitope retrieval by 1 mM EDTA in 10mM Tris, pH8.5, 120°C for 3min, TA806050)