

Product datasheet for TA807903

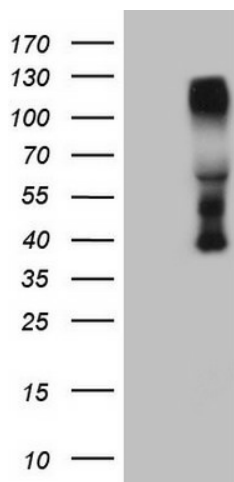
CTBP2 Mouse Monoclonal Antibody [Clone ID: OTI3G4]

Product data:

Product Type:	Primary Antibodies
Clone Name:	OTI3G4
Applications:	WB
Recommend Dilution:	WB 1:500
Reactivity:	Human
Host:	Mouse
Isotype:	IgG1
Clonality:	Monoclonal
Immunogen:	Human recombinant protein fragment corresponding to amino acids 233-336 of human CTBP2(NP_073713) produced in E.coli.
Formulation:	PBS (PH 7.3) containing 1% BSA, 50% glycerol and 0.02% sodium azide.
Concentration:	1 mg/ml
Purification:	Purified from mouse ascites fluids or tissue culture supernatant by affinity chromatography (protein A/G)
Gene Name:	C-terminal binding protein 2
Database Link:	NP_073713 Entrez Gene 1488 Human
Background:	This gene produces alternative transcripts encoding two distinct proteins. One protein is a transcriptional repressor, while the other isoform is a major component of specialized synapses known as synaptic ribbons. Both proteins contain a NAD ⁺ binding domain similar to NAD ⁺ -dependent 2-hydroxyacid dehydrogenases. A portion of the 3' untranslated region was used to map this gene to chromosome 21q21.3; however, it was noted that similar loci elsewhere in the genome are likely. Blast analysis shows that this gene is present on chromosome 10. Several transcript variants encoding two different isoforms have been found for this gene. [provided by RefSeq, Feb 2014]
Synonyms:	C-terminal binding protein 2; OTTHUMP00000020699; OTTHUMP00000020701; ribeye
Protein Families:	Stem cell - Pluripotency, Stem cell relevant signaling - Wnt Signaling pathway
Protein Pathways:	Chronic myeloid leukemia, Notch signaling pathway, Pathways in cancer, Wnt signaling pathway



[View online »](#)

Product images:

HEK293T cells were transfected with the pCMV6-ENTRY control (Left lane) or pCMV6-ENTRY CTBP2 ([RC213283], Right lane) cDNA for 48 hrs and lysed. Equivalent amounts of cell lysates (5 ug per lane) were separated by SDS-PAGE and immunoblotted with anti-CTBP2 (1:500).