

Product datasheet for TA808966

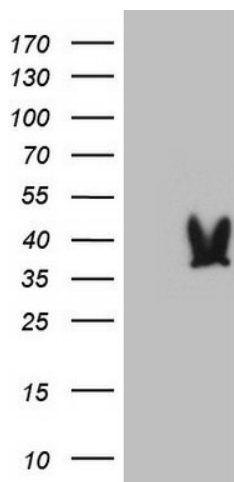
DEC R1 Mouse Monoclonal Antibody [Clone ID: OTI16C2]

Product data:

Product Type:	Primary Antibodies
Clone Name:	OTI16C2
Applications:	WB
Recommend Dilution:	WB 1:2000
Reactivity:	Human
Host:	Mouse
Isotype:	IgG1
Clonality:	Monoclonal
Immunogen:	Full length human recombinant protein of human DEC R1 (NP_001350) produced in HEK293T cell.
Formulation:	PBS (PH 7.3) containing 1% BSA, 50% glycerol and 0.02% sodium azide.
Concentration:	1 mg/ml
Purification:	Purified from mouse ascites fluids or tissue culture supernatant by affinity chromatography (protein A/G)
Predicted Protein Size:	32.1 kDa
Gene Name:	2,4-dienoyl-CoA reductase 1, mitochondrial
Database Link:	NP_001350 Entrez Gene 1666 Human
Background:	This gene encodes an accessory enzyme which participates in the beta-oxidation and metabolism of unsaturated fatty enoyl-CoA esters. [provided by RefSeq, Jul 2008]
Synonyms:	DEC R; NADPH; SDR18C1
Protein Families:	Druggable Genome



[View online »](#)

Product images:

HEK293T cells were transfected with the pCMV6-ENTRY control (Left lane) or pCMV6-ENTRY DEC1 ([RC211257], Right lane) cDNA for 48 hrs and lysed. Equivalent amounts of cell lysates (5 ug per lane) were separated by SDS-PAGE and immunoblotted with anti-DEC1 (1:2000). Positive lysates [LY419973] (100ug) and [LC419973] (20ug) can be purchased separately from OriGene.